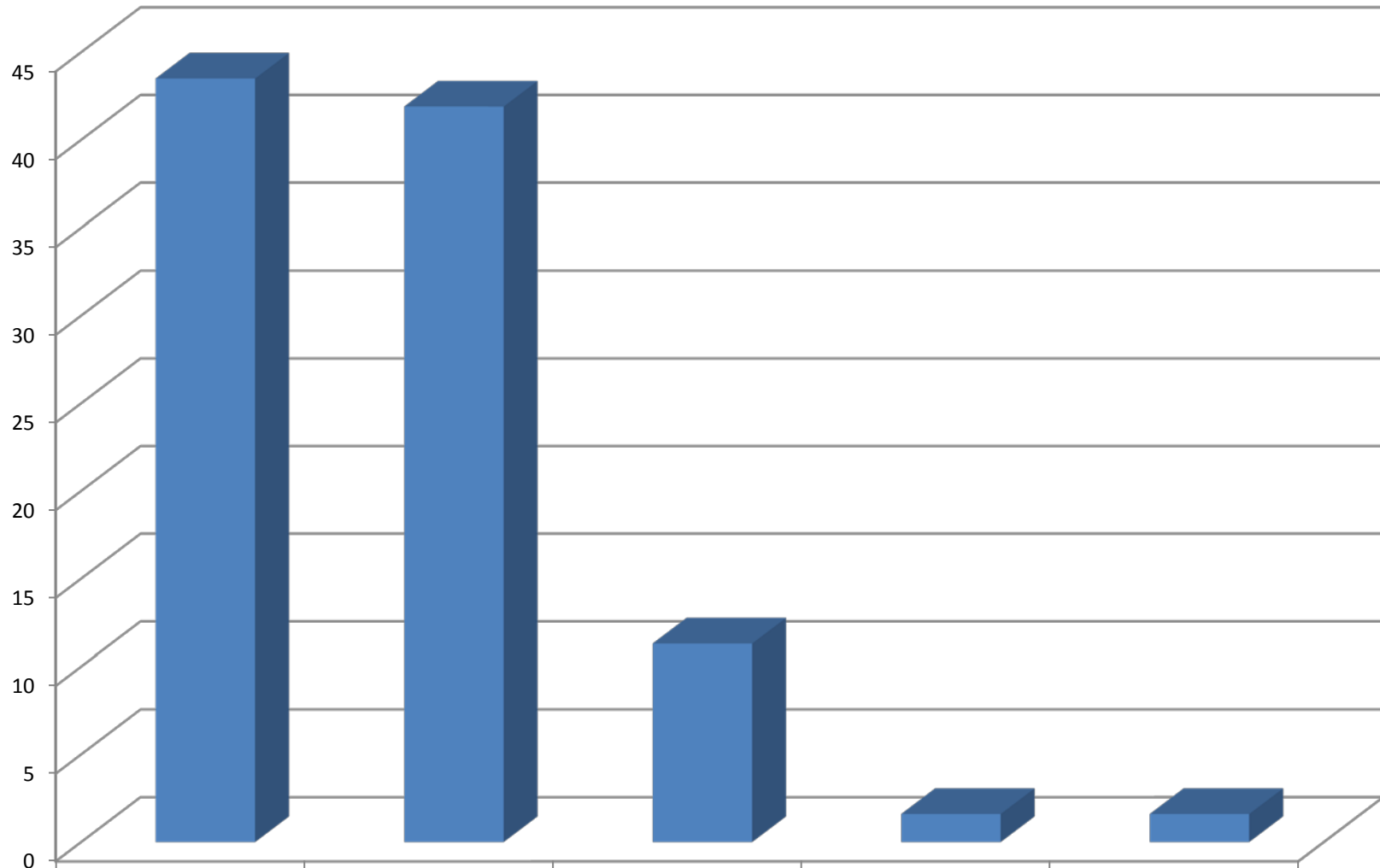


F1a. I am confident that I made the right decision to attend this university



UNCP (N=62)

Very Satisfied

Satisfied

Neither Satisfied nor
Dissatisfied

Dissatisfied

Very Dissatisfied

43.5

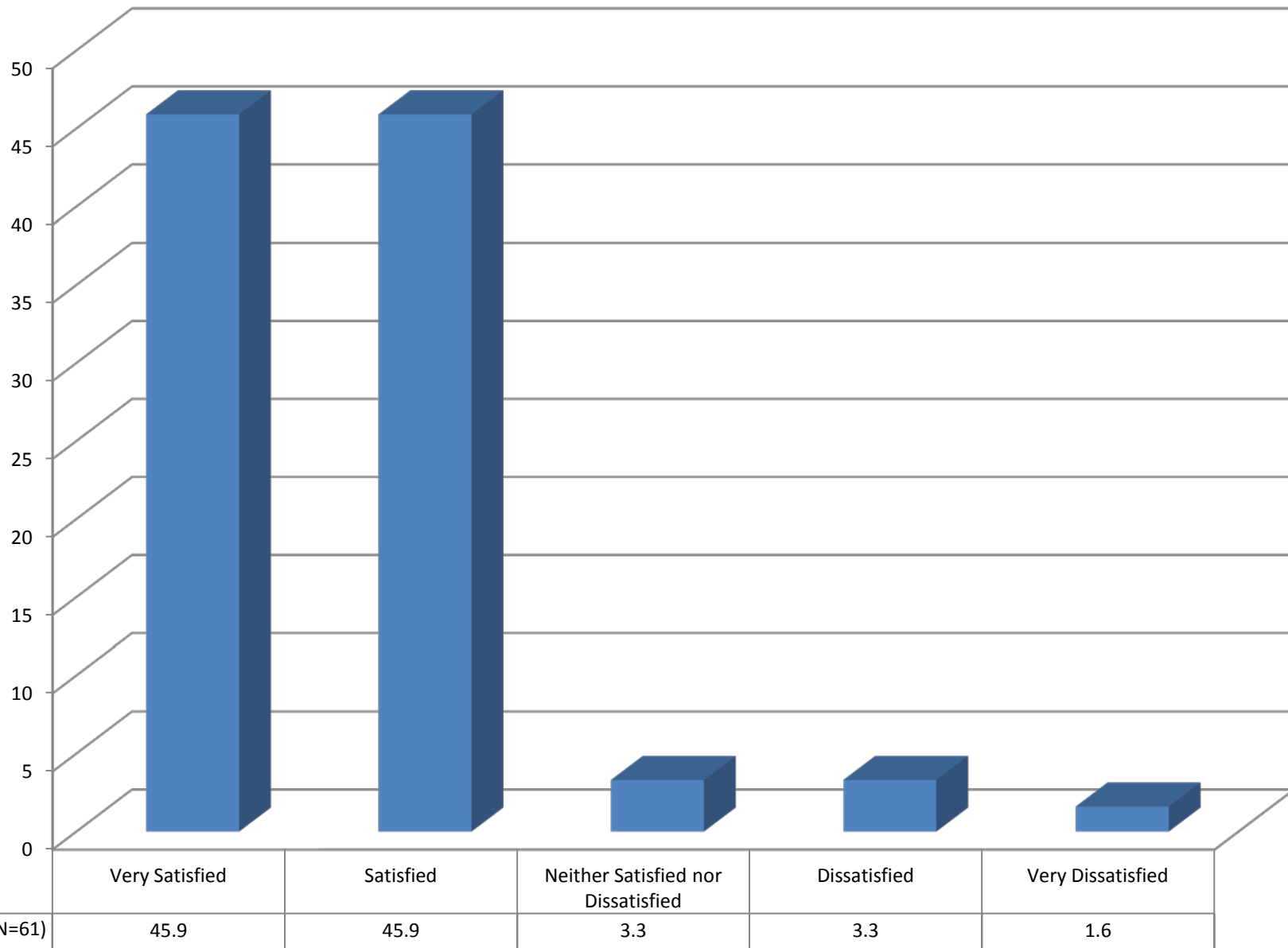
41.9

11.3

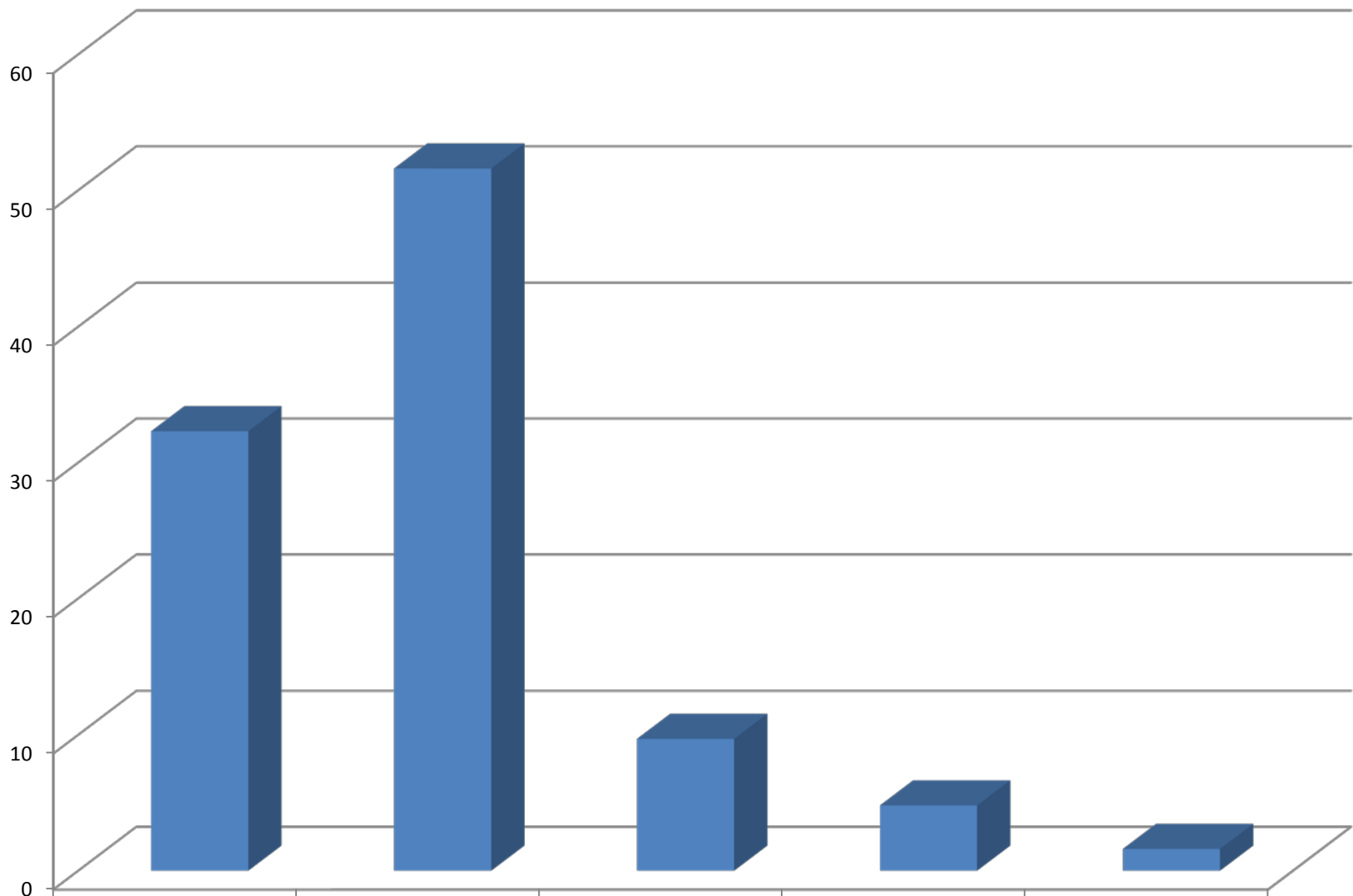
1.6

1.6

F1b. I believe I was academically prepared to attend this university

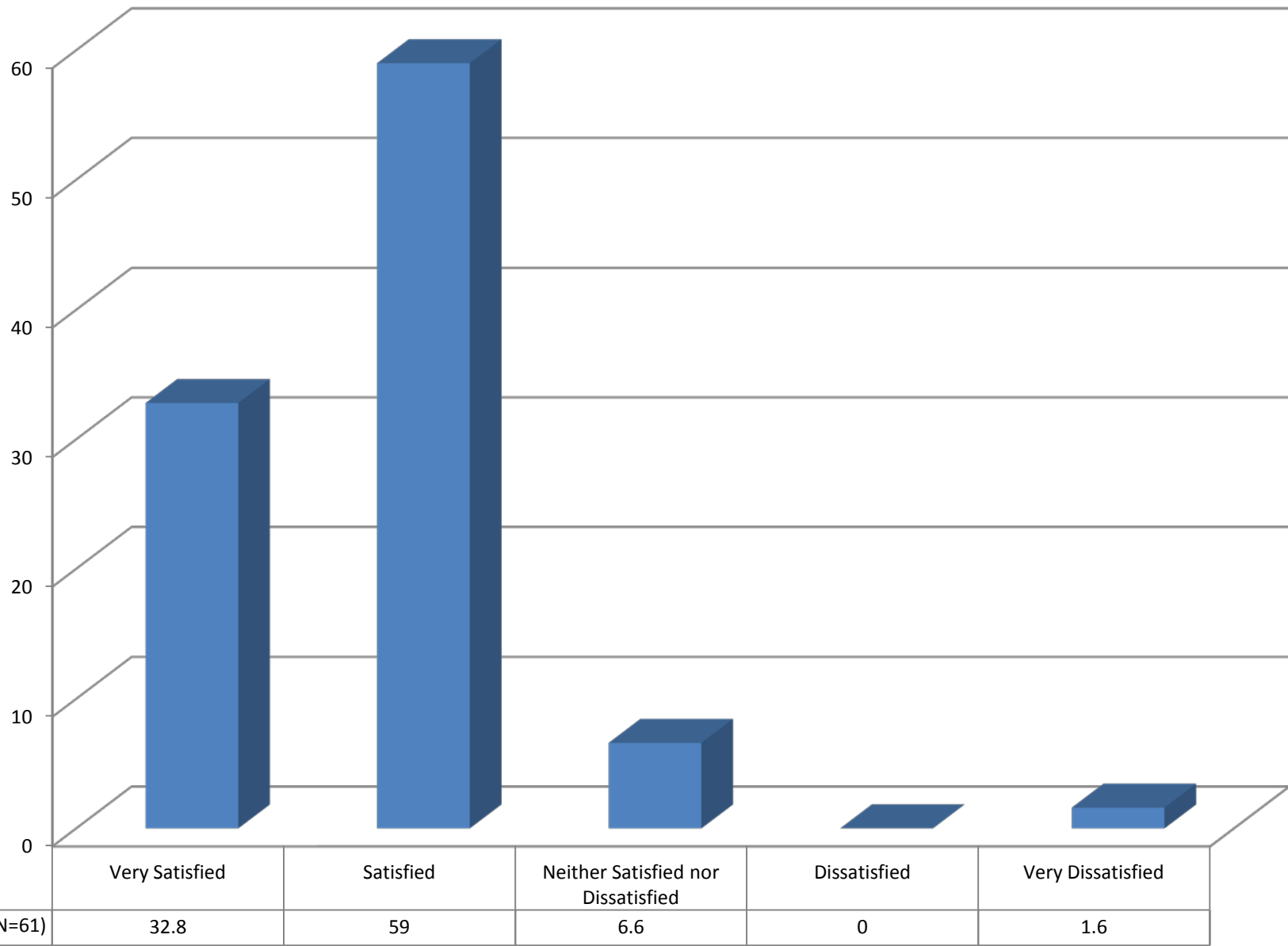


F1c. I feel I belong at this institution

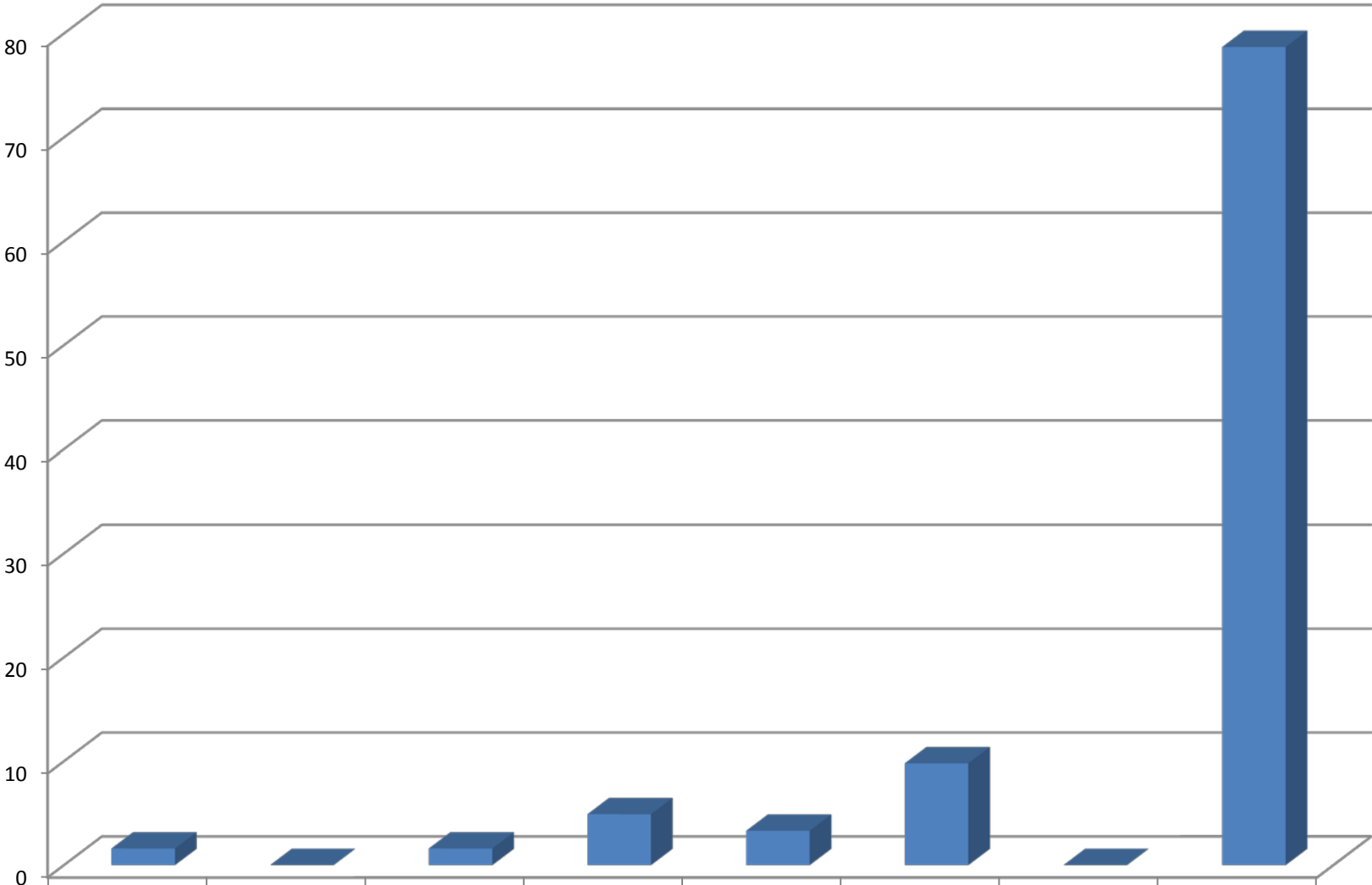


	Very Satisfied	Satisfied	Neither Satisfied nor Dissatisfied	Dissatisfied	Very Dissatisfied
UNCP (N=62)	32.3	51.6	9.7	4.8	1.6

F1d. I will have the financial resources I need to finish college



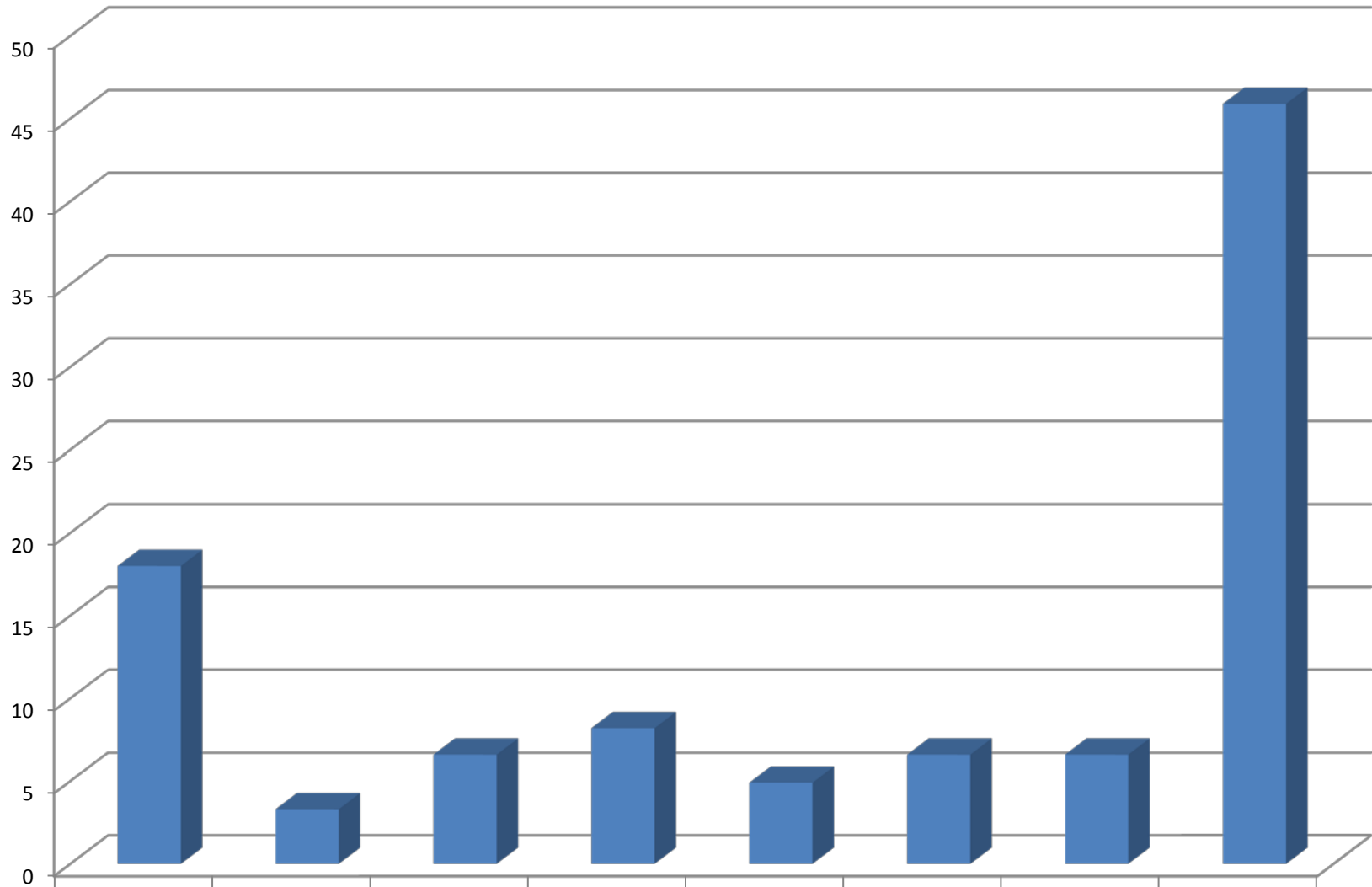
F2. While school has been in session this academic year, about how many hours per week have you spent working for pay on campus?



UNCP (N=13)

More than 30	26-30	21-25	16-20	11-15	6-10	1-5	0
1.6	0	1.6	4.9	3.3	9.8	0	78.7

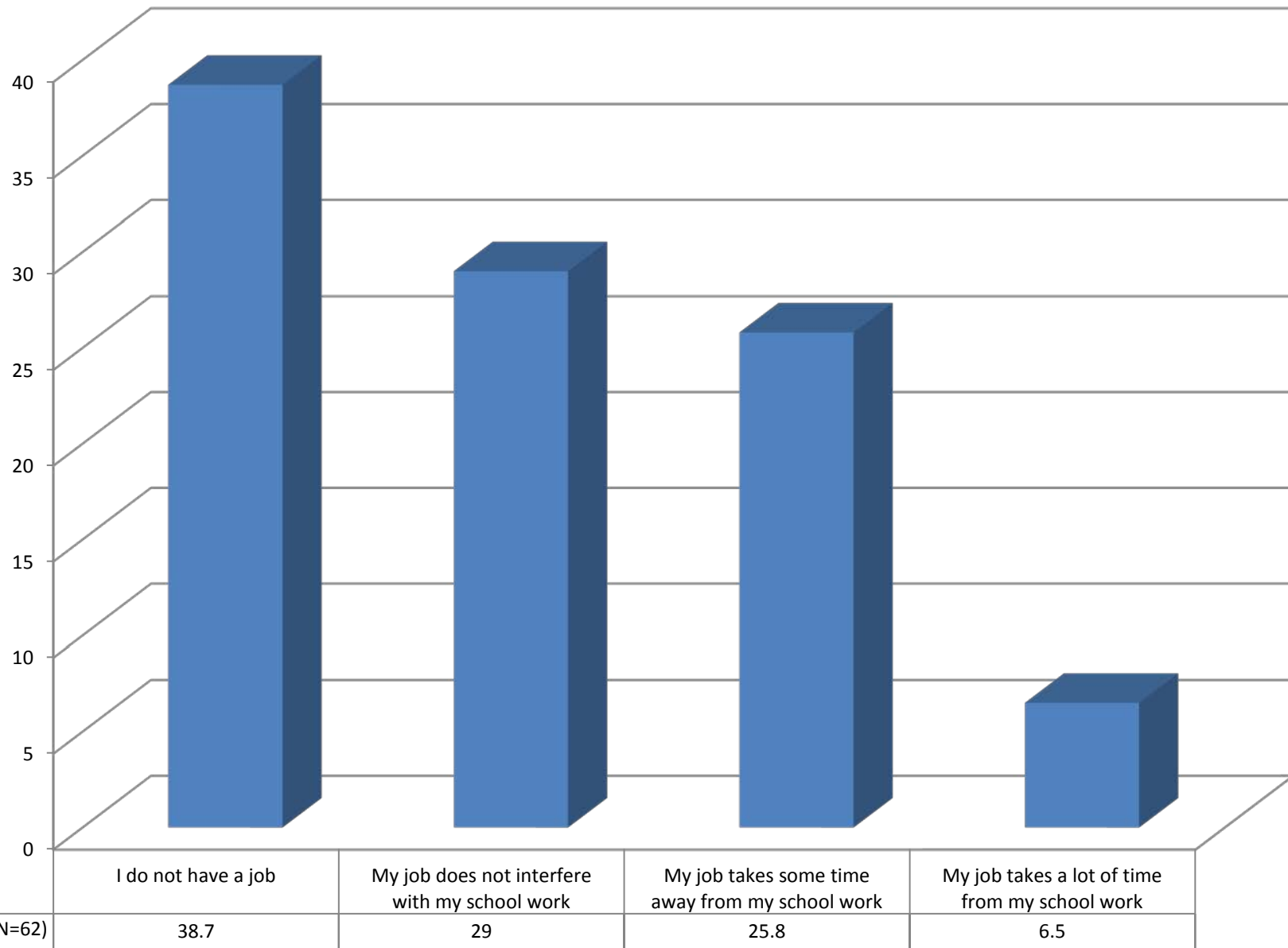
F3. While school has been in session this academic year, how many hours per week have you spent working for pay off campus?



UNCP (N=33)

More than 30	26-30	21-25	16-20	11-15	6-10	1-5	0
18	3.3	6.6	8.2	4.9	6.6	6.6	45.9

F4. How does your job affect your school work?



UNCP (N=62)

F5. Which of the following best describes your current educational plans?

