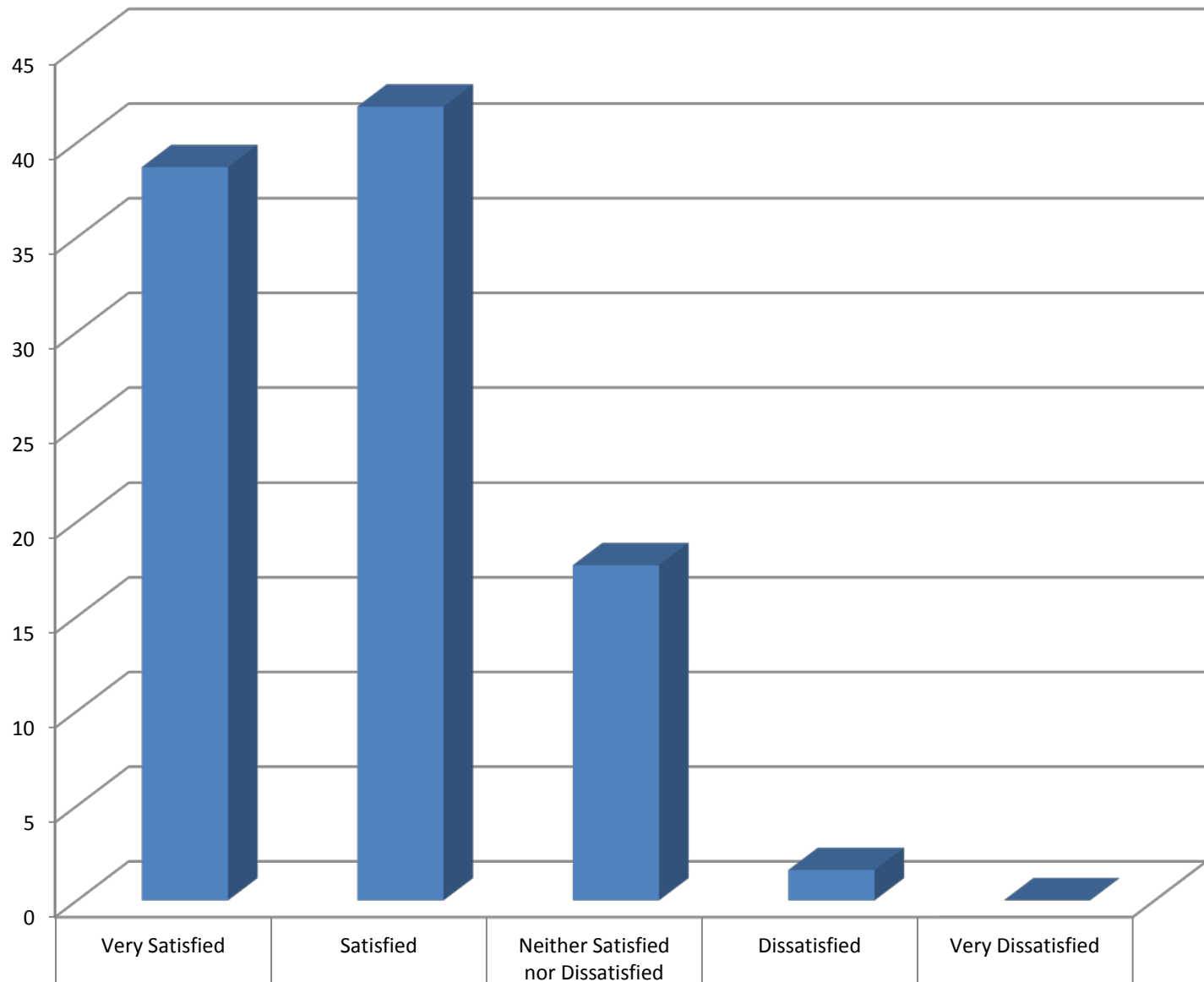
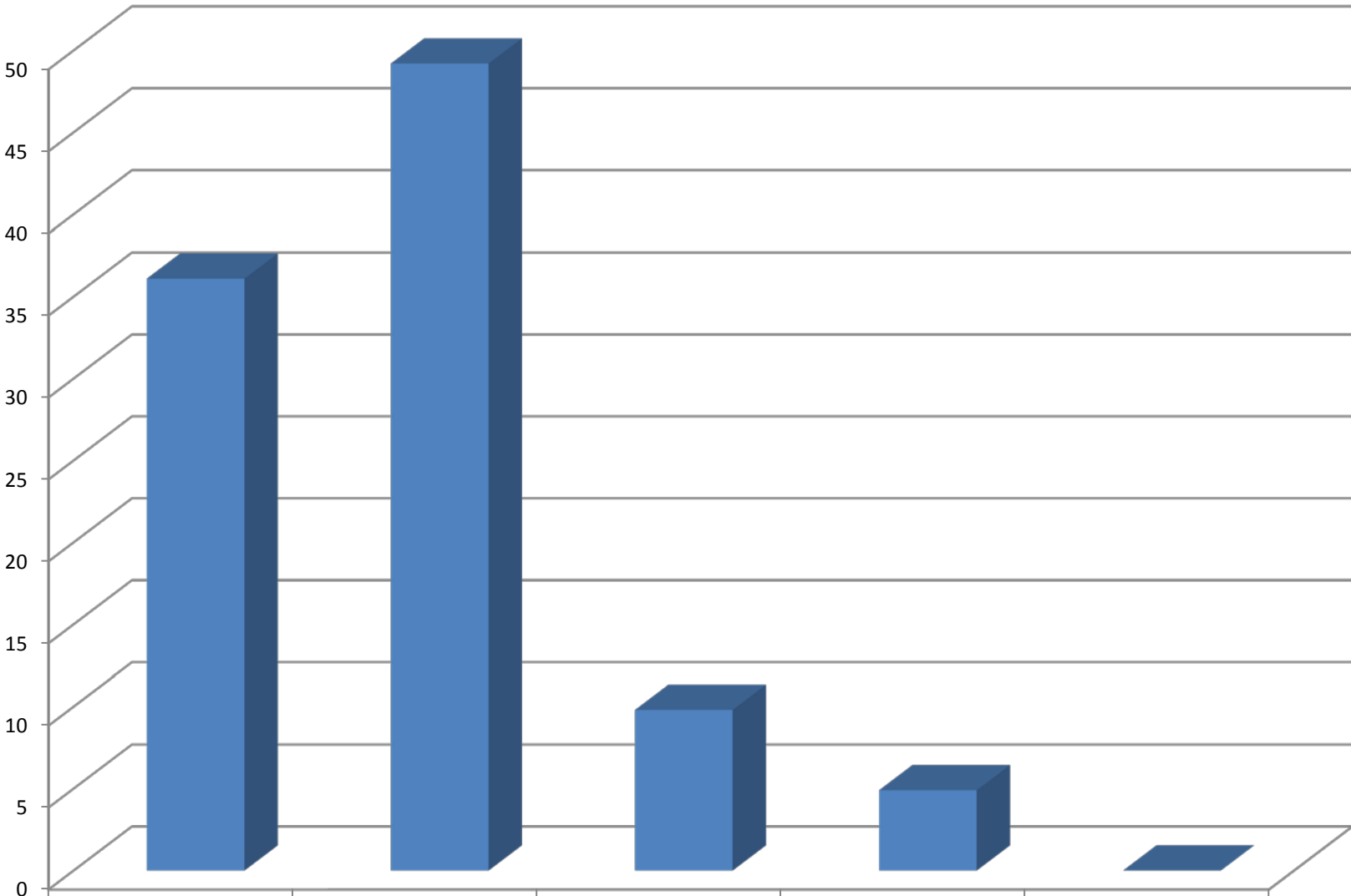


### B3a. Library: Helpfulness of staff



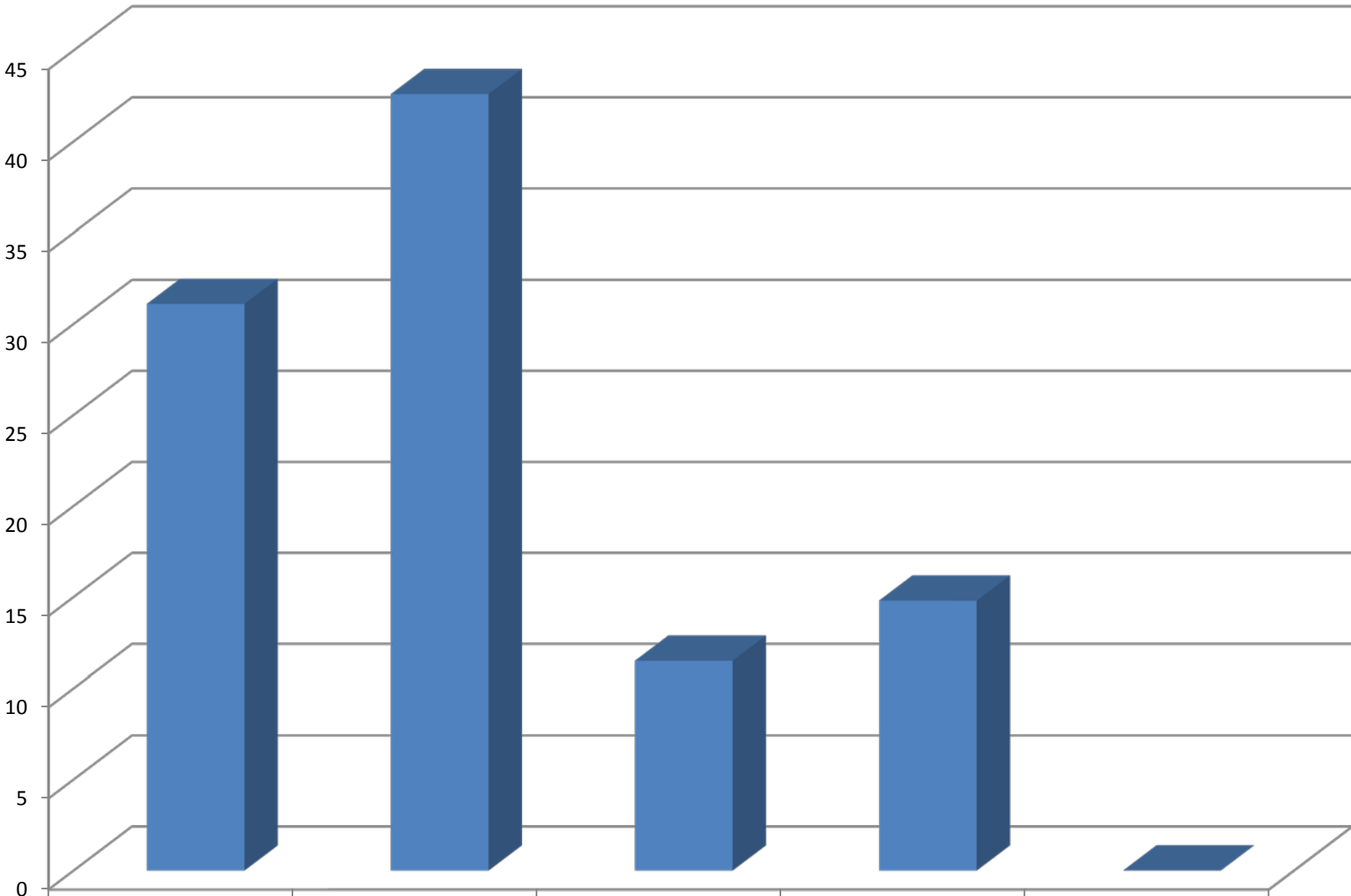
UNCP (N=62)	38.7	41.9	17.7	1.6	0
-------------	------	------	------	-----	---

### B3b. Library: Space for individual student work



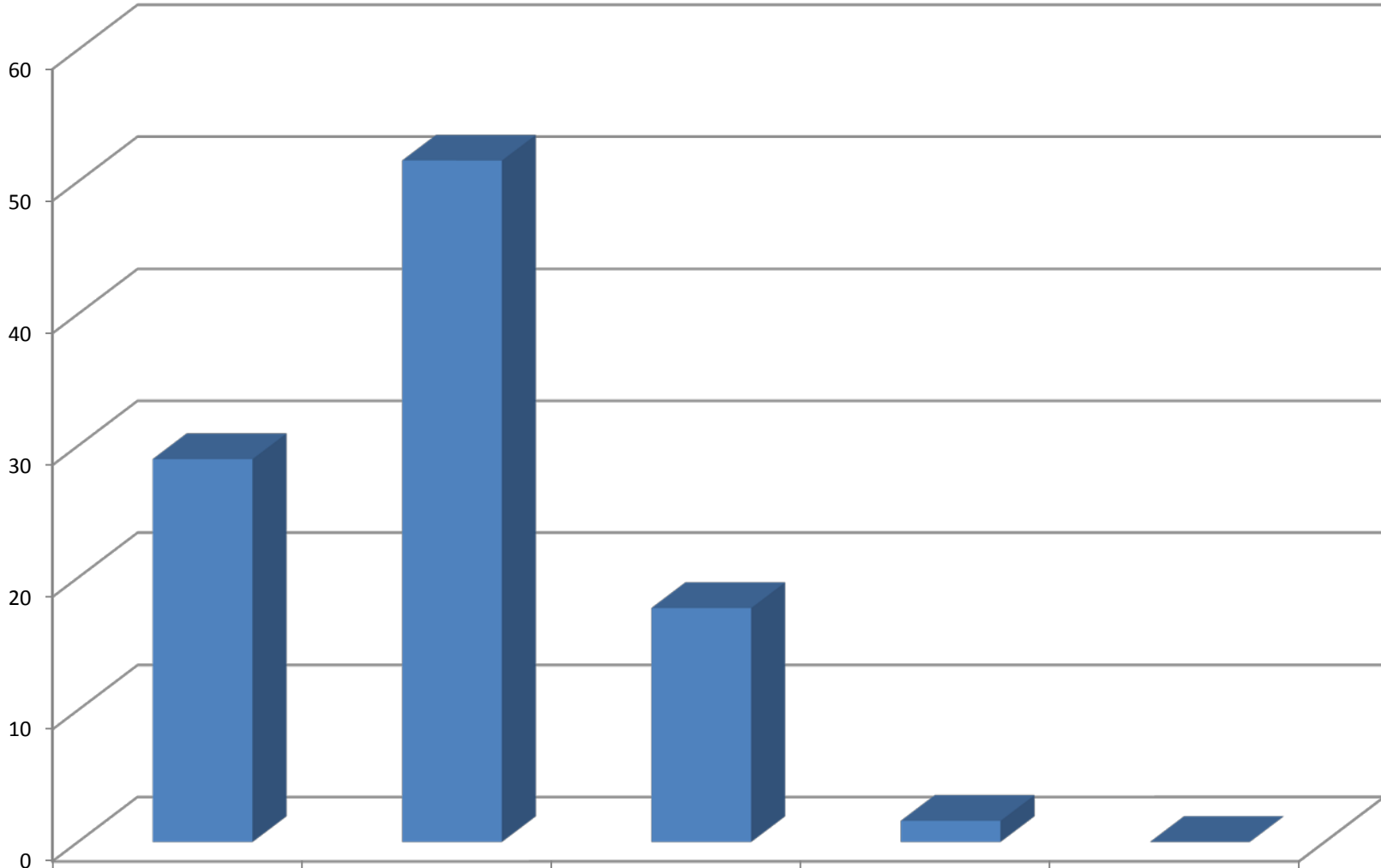
UNCP (N=61)	36.1	49.2	9.8	4.9	0
-------------	------	------	-----	-----	---

### B3c. Library: Space for group work



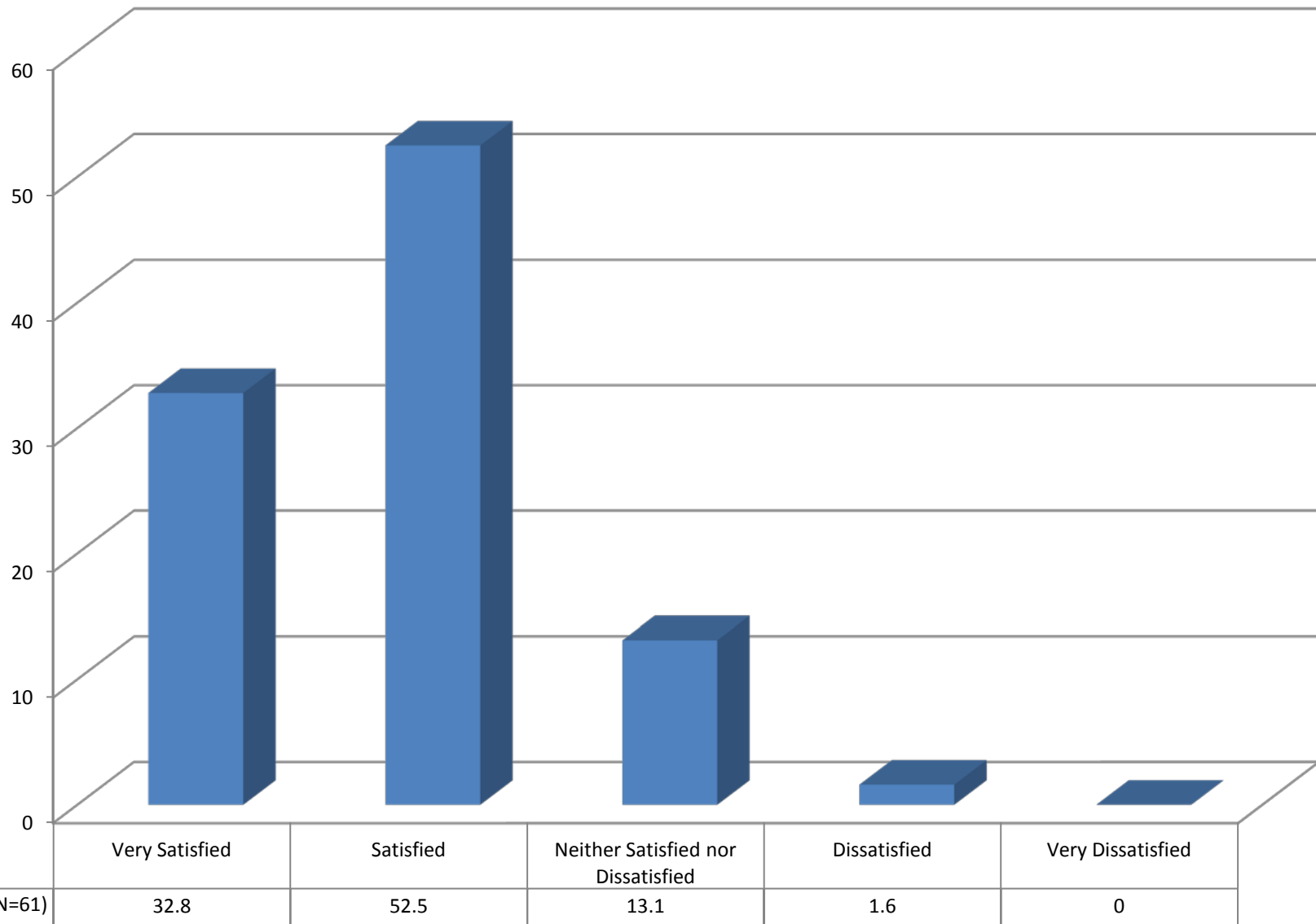
UNCP (N=61)	31.1	42.6	11.5	14.8	0
-------------	------	------	------	------	---

### B3d. Library: Training/instruction for using library and information resources

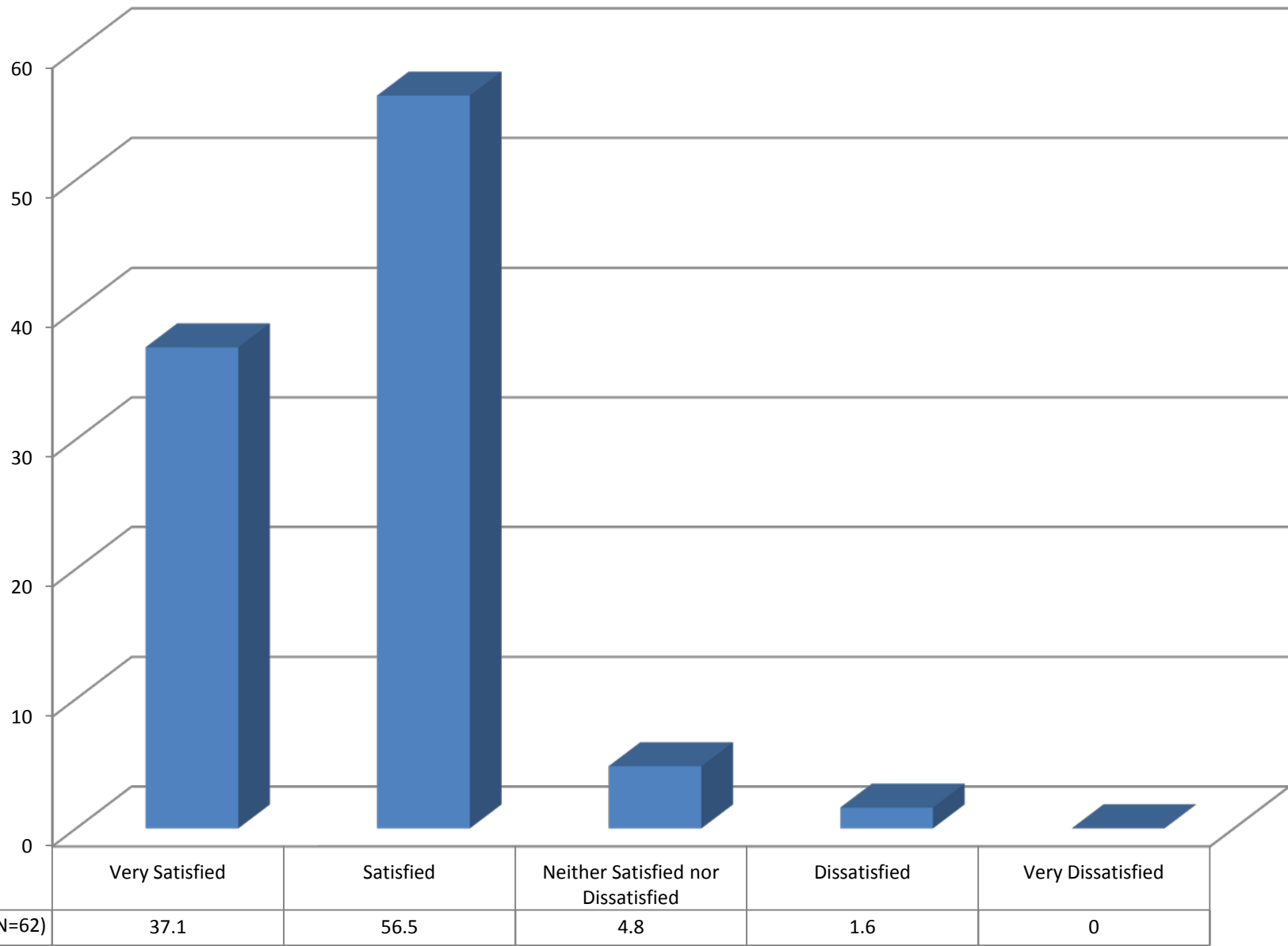


	Very Satisfied	Satisfied	Neither Satisfied nor Dissatisfied	Dissatisfied	Very Dissatisfied
UNCP (N=62)	29	51.6	17.7	1.6	0

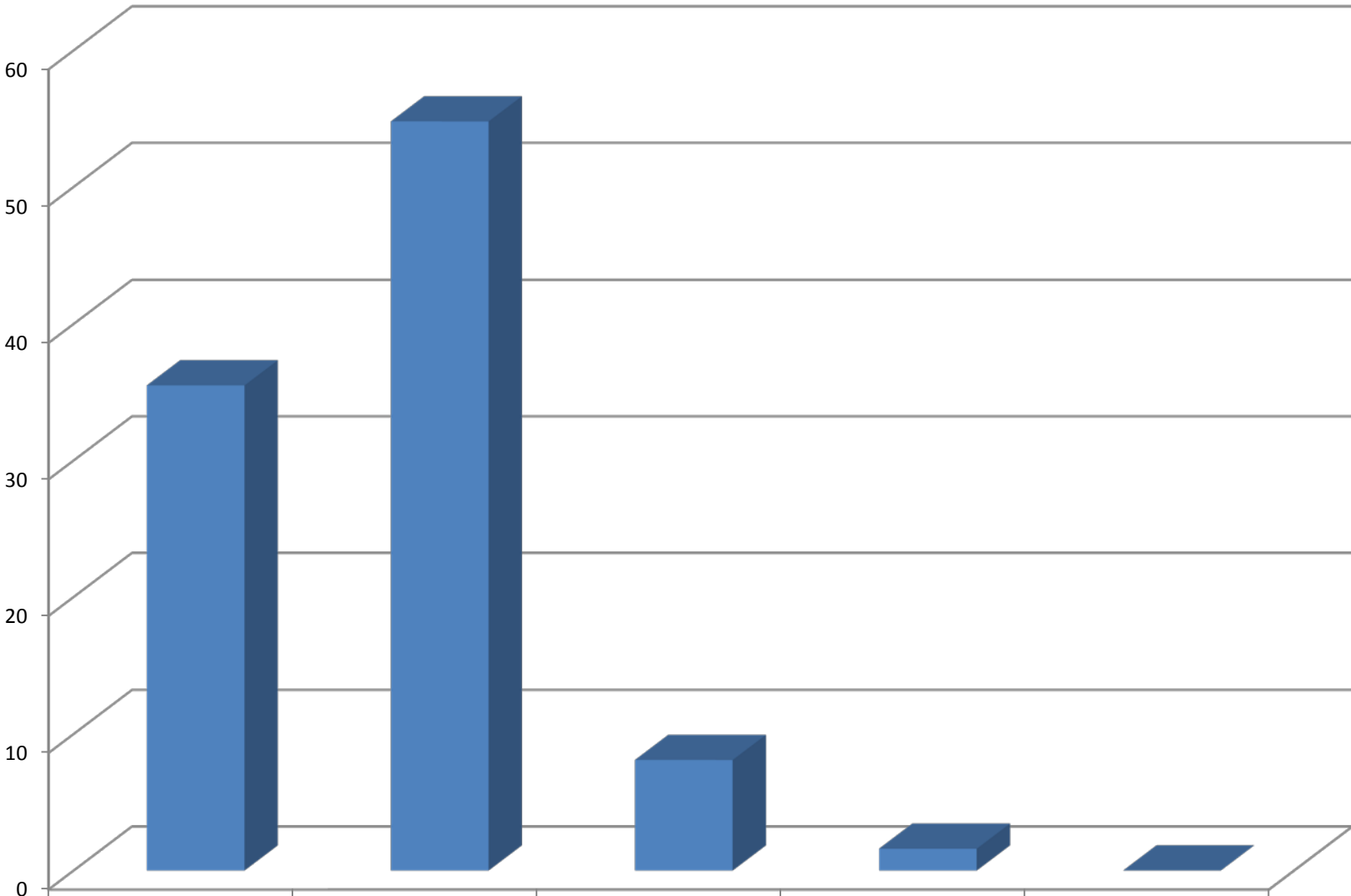
### B3e. Library: Availability of information/material I need for my class assignments



### B3f. Library: Access to online library resources



### B3g. Library: Hours of operation



UNCP (N=62)	35.5	54.8	8.1	1.6	0
-------------	------	------	-----	-----	---