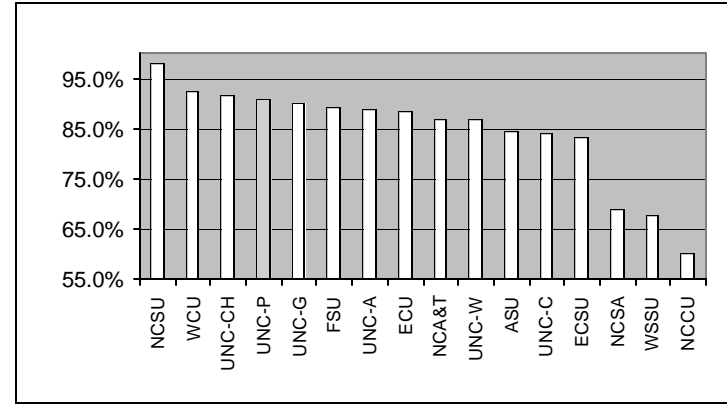


University of North Carolina 2000 Graduating Senior Survey

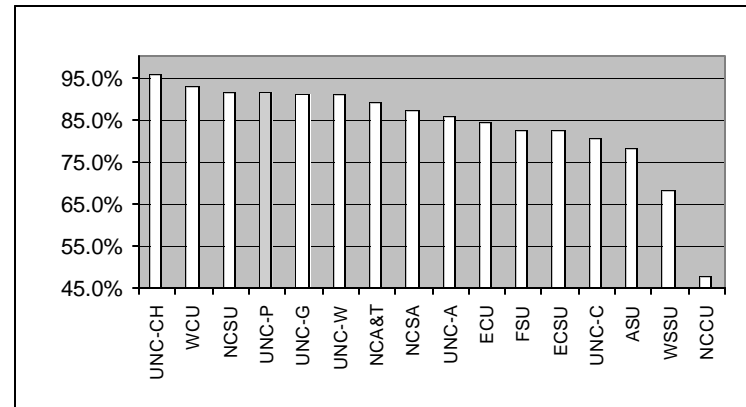
Library Hours of operation

		% Excell + Good			% Excell + Good	Rank (All) (MS)
Research	NCSU	98.1%	Masters	ASU	84.6%	(4) (2)
	UNC-CH	91.5%		FSU	89.4%	
Doctoral	UNC-G	90.2%	NCA&T	87.0%		
	ECU	88.6%	NCCU	60.3%		
Undergrad	UNC-A	88.9%	UNC-C	84.0%		
	ECSU	83.2%	UNC-P	90.7%		
Special	WSSU	67.8%	UNC-W	87.0%		
	NCSA	69.1%	WCU	92.6%		
			Total	84.7%		
			UNC Tot	88.5%		



Access to databases and collections

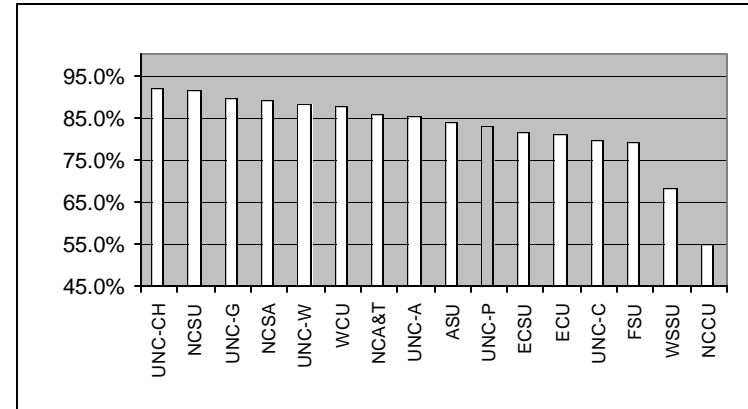
		% Excell + Good			% Excell + Good	Rank (All) (MS)
Research	NCSU	91.7%	Masters	ASU	78.2%	(4) (2)
	UNC-CH	95.6%		FSU	82.6%	
Doctoral	UNC-G	91.2%	NCA&T	89.1%		
	ECU	84.4%	NCCU	48.0%		
Undergrad	UNC-A	85.9%	UNC-C	80.7%		
	ECSU	82.3%	UNC-P	91.5%		
Special	WSSU	68.2%	UNC-W	90.9%		
	NCSA	87.0%	WCU	92.9%		
			Total	82.3%		
			UNC Tot	87.0%		



University of North Carolina 2000 Graduating Senior Survey

Staff responsiveness

		% Excell + Good			% Excell + Good	Rank (All) (MS)
Research	NCSU	91.7%	Masters	ASU	83.8%	(10) (5)
	UNC-CH	91.8%		FSU	79.0%	
Doctoral	UNC-G	89.4%	NCA&T	86.0%		
	ECU	80.8%	NCCU	55.0%		
Undergrad	UNC-A	85.1%	UNC-C	79.6%		
	ECSU	81.3%	UNC-P	82.7%		
Special	WSSU	68.2%	UNC-W	88.3%		
	NCSA	89.0%	WCU	87.9%		
			Total	81.4%		
			UNC Tot	85.3%		



Library services overall

		% Excell + Good			% Excell + Good	Rank (All) (MS)
Research	NCSU	95.7%	Masters	ASU	81.7%	(6) (3)
	UNC-CH	97.7%		FSU	88.2%	
Doctoral	UNC-G	94.6%	NCA&T	89.9%		
	ECU	89.8%	NCCU	53.7%		
Undergrad	UNC-A	89.0%	UNC-C	83.7%		
	ECSU	84.1%	UNC-P	90.0%		
Special	WSSU	68.6%	UNC-W	92.9%		
	NCSA	86.2%	WCU	93.7%		
			Total	84.9%		
			UNC Tot	90.1%		

