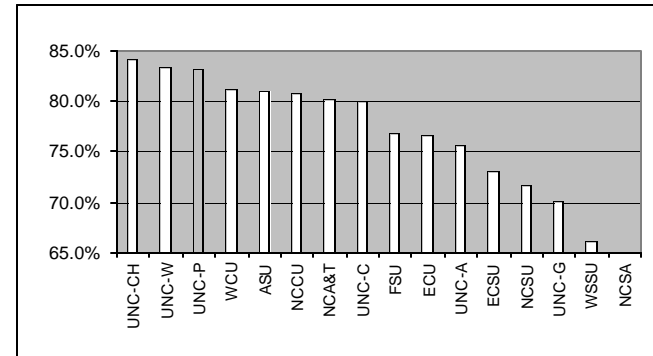


University of North Carolina 2000 Graduating Senior Survey

Opportunities to participate in community service projects

		% Excell + Good			% Excell + Good	
Research	NCSU	71.7%	Masters	ASU	81.1%	(3) (2)
	UNC-CH	84.3%		FSU	76.8%	
Doctoral	UNC-G	70.1%		NCA&T	80.2%	
	ECU	76.7%		NCCU	80.8%	
Undergrad	UNC-A	75.6%		UNC-C	80.1%	
	ECSU	73.1%		UNC-P	83.3%	
	WSSU	66.2%		UNC-W	83.5%	
Special	NCSA	47.9%		WCU	81.2%	
				Total	81.2%	
			UNC Tot	Total	78.8%	



Opportunities to develop leadership skills

		% Excell + Good			% Excell + Good	Rank (All) (MS)
Research	NCSU	80.6%	Masters	ASU	87.0%	(1) (1)
	UNC-CH	81.4%		FSU	80.5%	
Doctoral	UNC-G	83.0%		NCA&T	91.4%	
	ECU	83.2%		NCCU	83.6%	
Undergrad	UNC-A	82.1%		UNC-C	85.5%	
	ECSU	81.9%		UNC-P	91.8%	
	WSSU	79.8%		UNC-W	88.0%	
Special	NCSA	71.1%		WCU	89.1%	
				Total	87.1%	
			UNC Tot	Total	83.9%	

