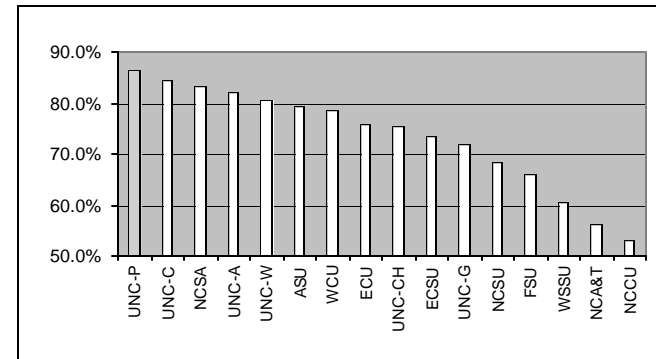


University of North Carolina 2000 Graduating Senior Survey

Business services/cashier/student accounts - General

		% Excell + Good			% Excell + Good	Rank (All) (MS)
Research	NCSU	68.5%	Masters	ASU	79.6%	
	UNC-CH	75.5%		FSU	66.1%	
Doctoral	UNC-G	71.9%		NCA&T	56.2%	
	ECU	76.0%		NCCU	53.0%	
Undergrad	UNC-A	82.3%		UNC-C	84.5%	
	ECSU	73.5%		UNC-P	86.5%	(1) (1)
	WSSU	60.7%		UNC-W	80.7%	
Special	NCSA	83.5%		WCU	78.8%	
				Total	76.2%	
			UNC Tot		74.8%	



Business services/cashier/students accounts - Staff Responsiveness

		% Excell + Good			% Excell + Good	Rank (All) (MS)
Research	NCSU	62.4%	Masters	ASU	75.8%	
	UNC-CH	74.7%		FSU	69.5%	
Doctoral	UNC-G	69.8%		NCA&T	52.8%	
	ECU	73.6%		NCCU	47.4%	
Undergrad	UNC-A	81.0%		UNC-C	84.7%	
	ECSU	64.4%		UNC-P	86.8%	(1) (1)
	WSSU	63.9%		UNC-W	77.1%	
Special	NCSA	85.5%		WCU	75.1%	
				Total	75.2%	
			UNC Tot		73.0%	

