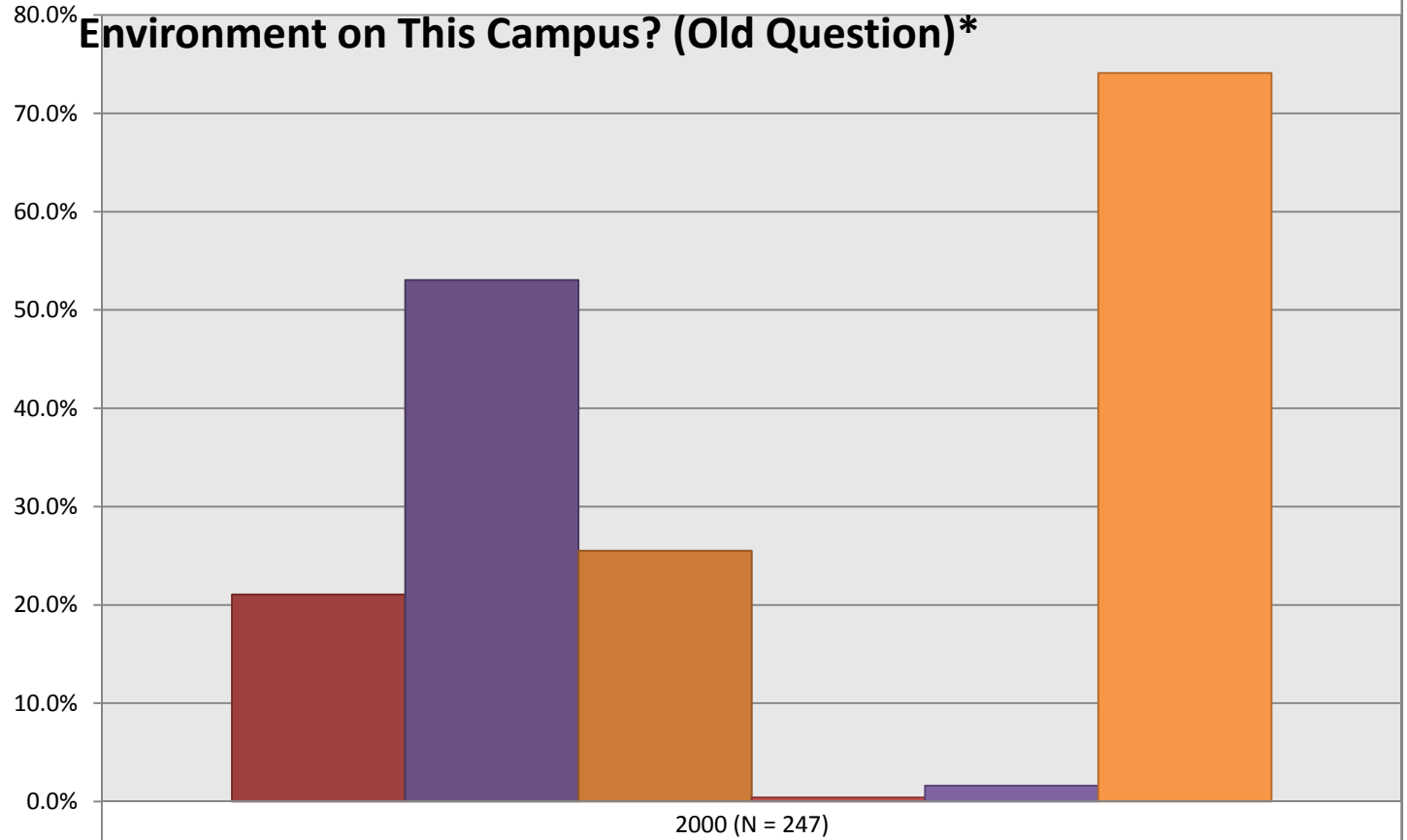


E1 - All Things Considered, How Would You Characterize the Intellectual Environment on This Campus? (Old Question)*



Very Strong %

21.1%

Strong %

53.0%

Average %

25.5%

Weak %

0.4%

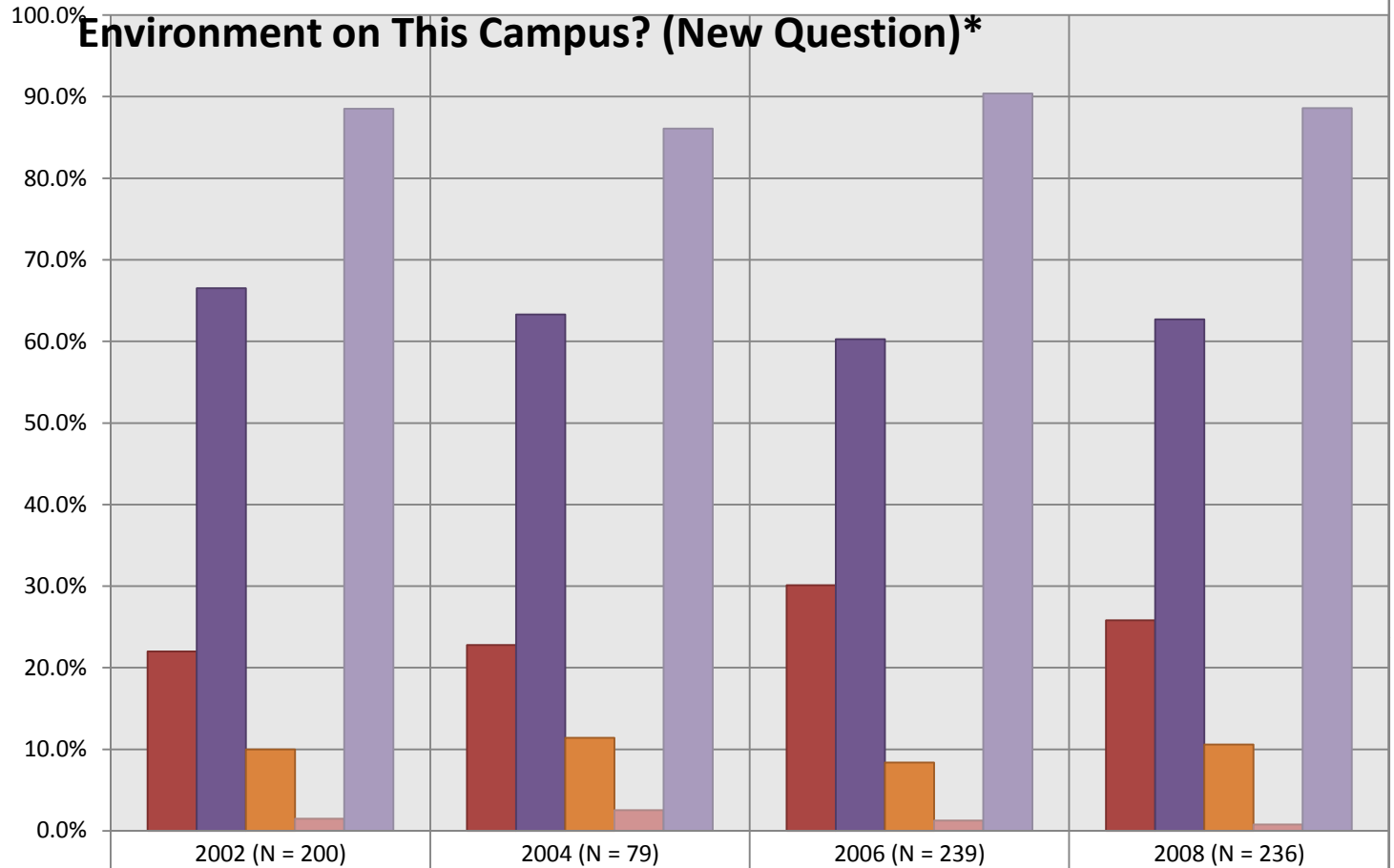
Very Weak %

1.6%

Very Strong and Strong Combined %

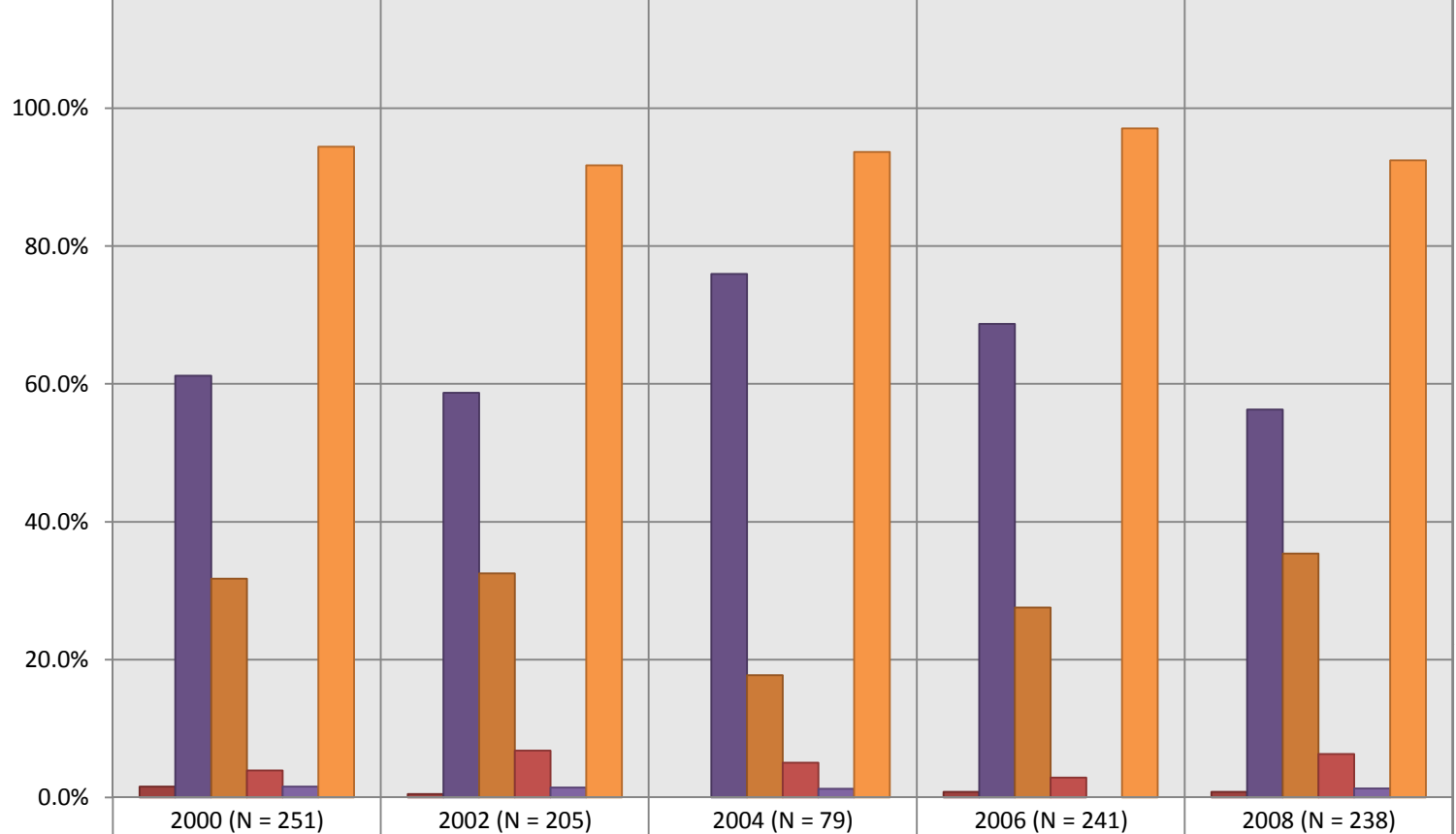
74.1%

E1 - All Things Considered, How Would You Characterize the Intellectual Environment on This Campus? (New Question)*



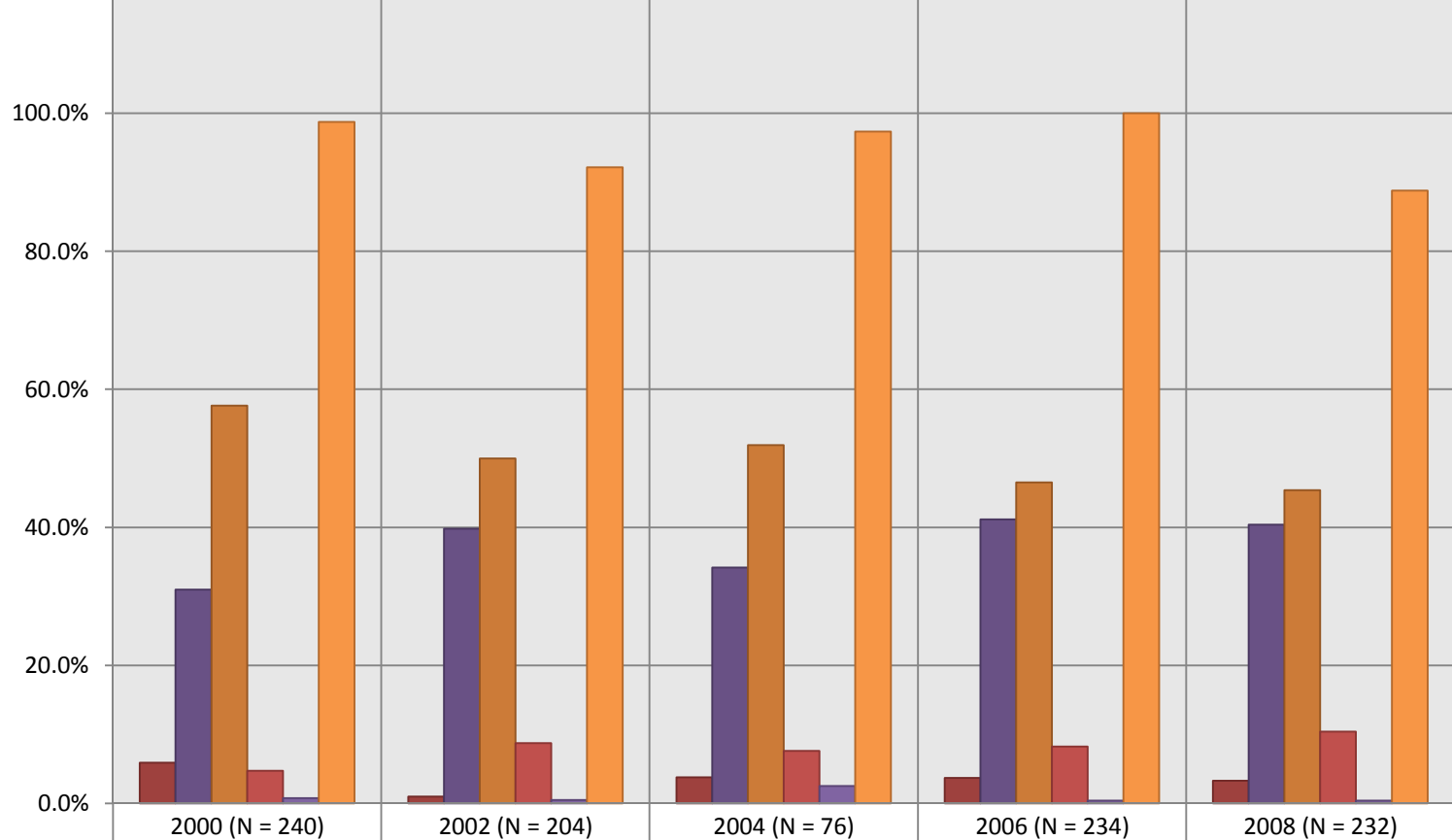
Very Strong %	22.0%	22.8%	30.1%	25.8%
Strong %	66.5%	63.3%	60.3%	62.7%
Weak %	10.0%	11.4%	8.4%	10.6%
Very Weak %	1.5%	2.5%	1.3%	0.8%
Very Strong and Strong Combined %	88.5%	86.1%	90.4%	88.6%

E2a - How Would You Evaluate the Quality of Instruction in Your Major?



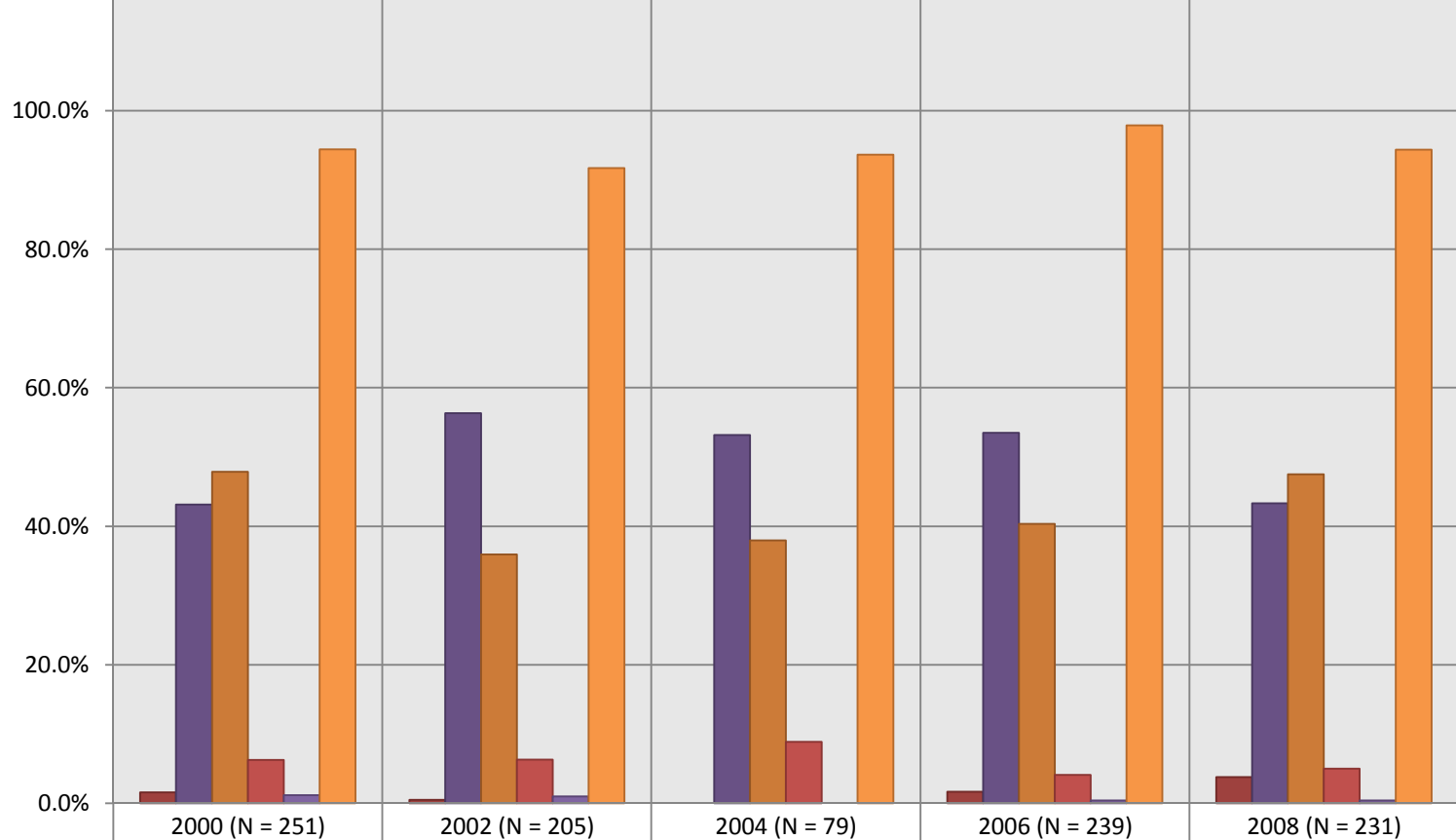
	2000 (N = 251)	2002 (N = 205)	2004 (N = 79)	2006 (N = 241)	2008 (N = 238)
Missing %	1.6%	0.5%	0.0%	0.8%	0.8%
Excellent %	61.2%	58.7%	75.9%	68.7%	56.3%
Good %	31.8%	32.5%	17.7%	27.6%	35.4%
Fair %	3.9%	6.8%	5.1%	2.9%	6.3%
Poor %	1.6%	1.5%	1.3%	0.0%	1.3%
Excellent and Good Combined %	94.4%	91.7%	93.7%	97.1%	92.4%

E2b - How Would You Evaluate the Quality of Instruction Overall?



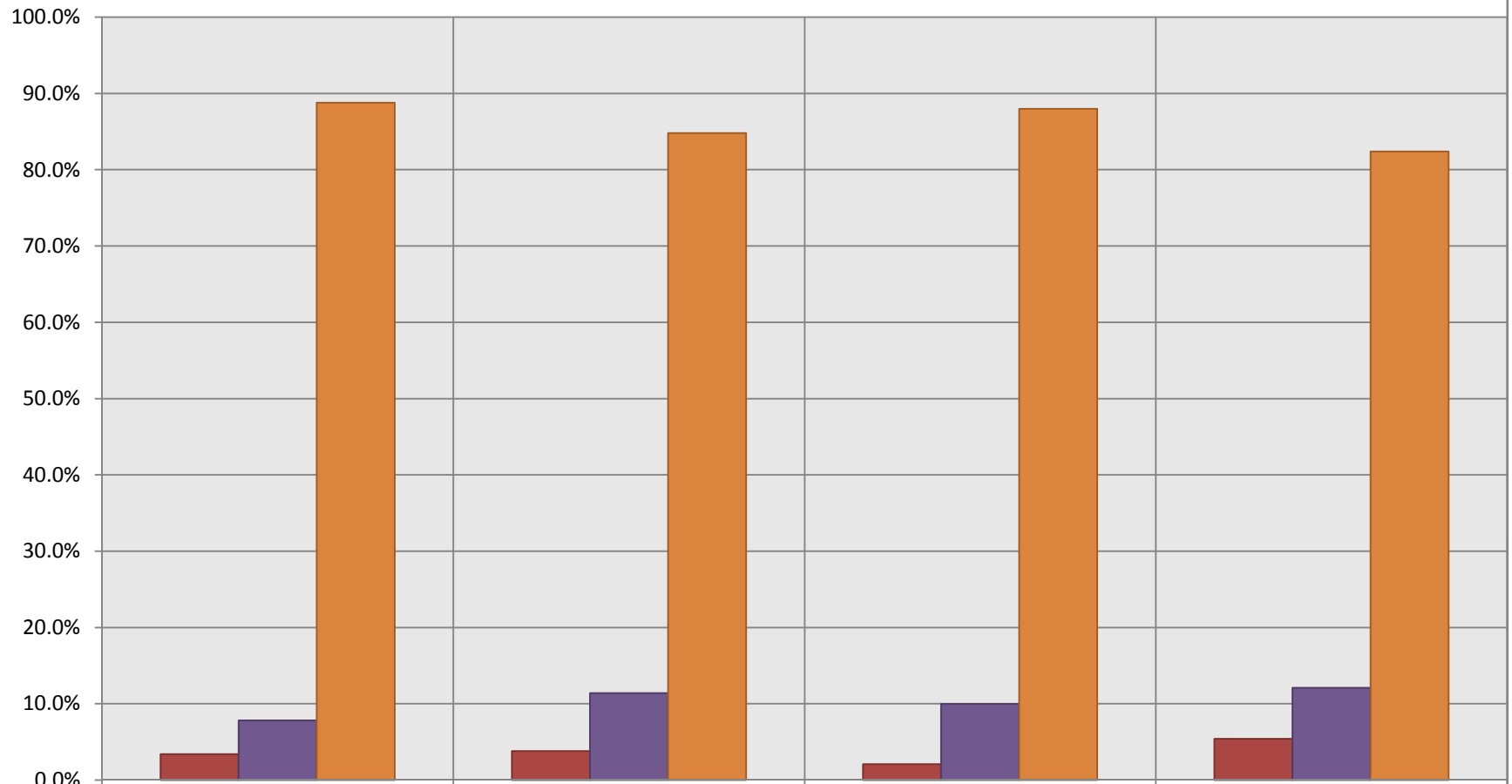
Missing %	5.9%	1.0%	3.8%	3.7%	3.3%
Excellent %	31.0%	39.8%	34.2%	41.2%	40.4%
Good %	57.6%	50.0%	51.9%	46.5%	45.4%
Fair %	4.7%	8.7%	7.6%	8.2%	10.4%
Poor %	0.8%	0.5%	2.5%	0.4%	0.4%
Excellent and Good Combined %	98.8%	92.2%	97.4%	100.0%	88.8%

E3 - How Would You Evaluate the Overall Education You are Receiving?



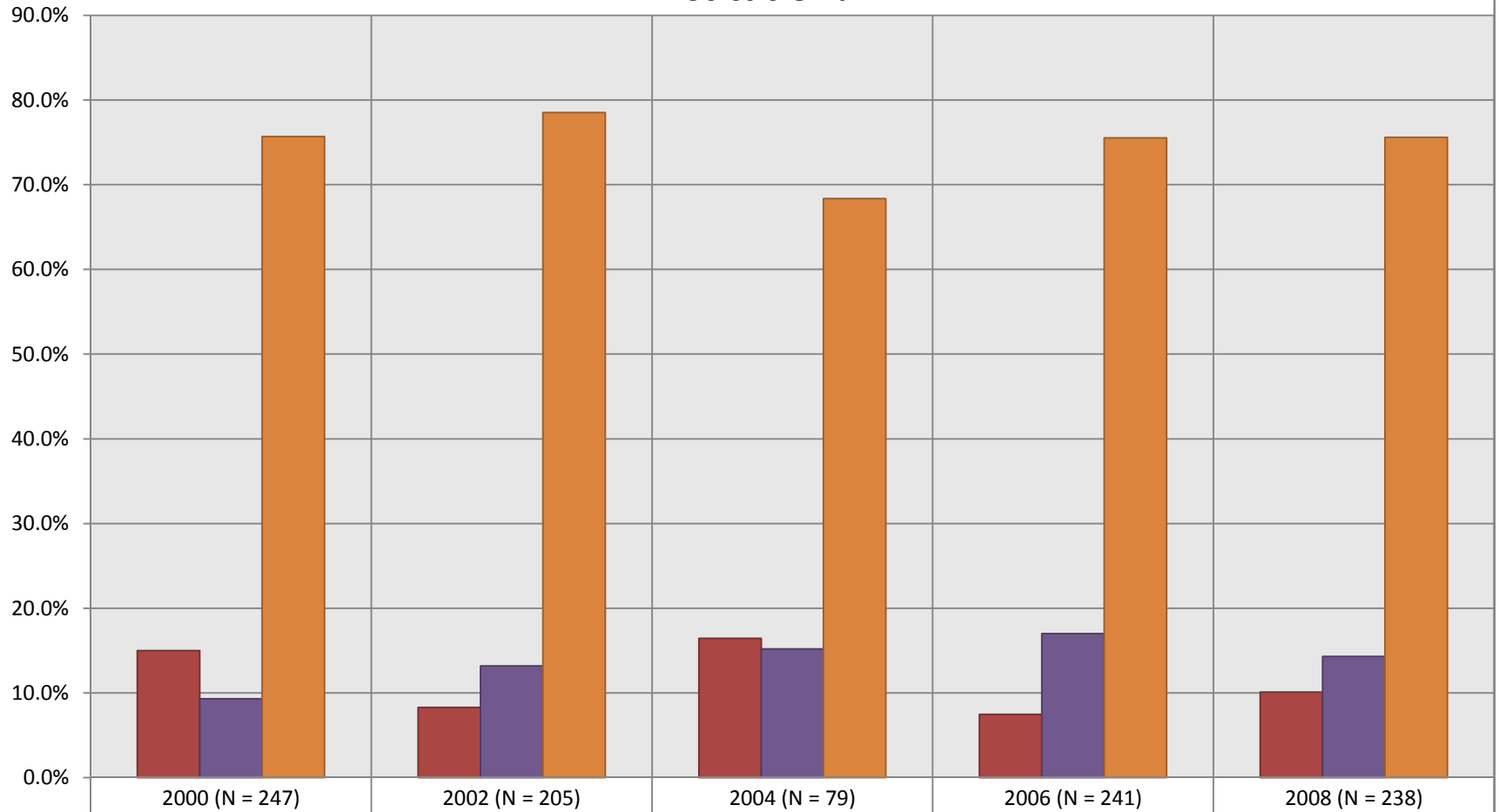
	2000 (N = 251)	2002 (N = 205)	2004 (N = 79)	2006 (N = 239)	2008 (N = 231)
Missing %	1.6%	0.5%	0.0%	1.6%	3.8%
Excellent %	43.1%	56.3%	53.2%	53.5%	43.3%
Good %	47.8%	35.9%	38.0%	40.3%	47.5%
Fair %	6.3%	6.3%	8.9%	4.1%	5.0%
Poor %	1.2%	1.0%	0.0%	0.4%	0.4%
Excellent and Good Combined %	94.4%	91.7%	93.7%	97.9%	94.4%

E4 - Would You Recommend This Institution to a Friend?



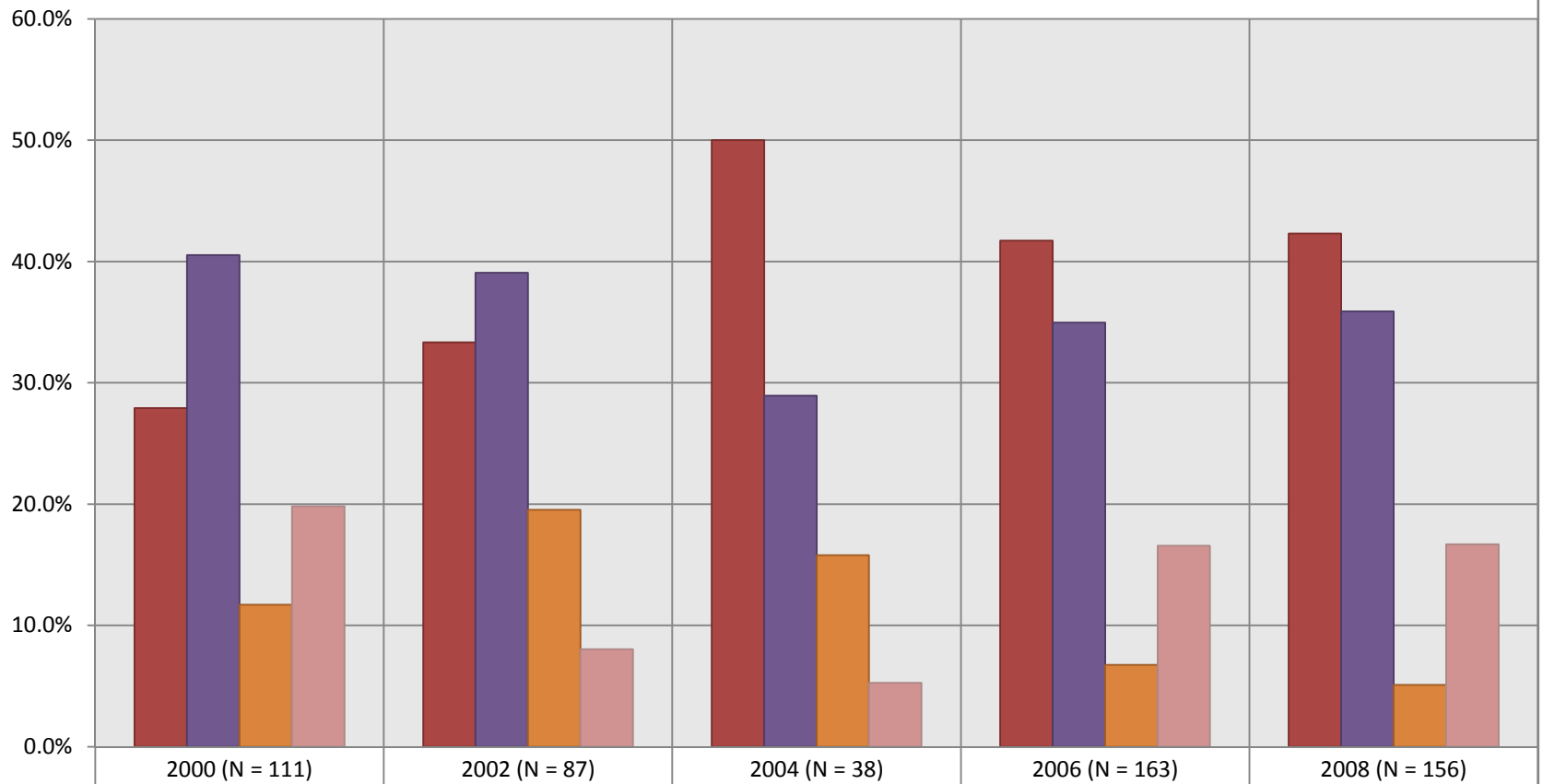
■ No %	3.4%	3.8%	2.1%	5.4%
■ Not Sure %	7.8%	11.4%	10.0%	12.1%
■ Yes %	88.8%	84.8%	88.0%	82.4%

E5 - If You Could Start Over Would You Choose to Attend This Institution?



■ No %	15.0%	8.3%	16.5%	7.5%	10.1%
■ Not Sure %	9.3%	13.2%	15.2%	17.0%	14.3%
■ Yes %	75.7%	78.5%	68.4%	75.5%	75.6%

E6 - How Likely Would You Have Obtained Your Degree Had The Off-Campus Program Not Been Available?



Very Likely %	27.9%	33.3%	50.0%	41.7%	42.3%
Probably %	40.5%	39.1%	28.9%	35.0%	35.9%
Probably Not %	11.7%	19.5%	15.8%	6.7%	5.1%
Not Likely %	19.8%	8.0%	5.3%	16.6%	16.7%