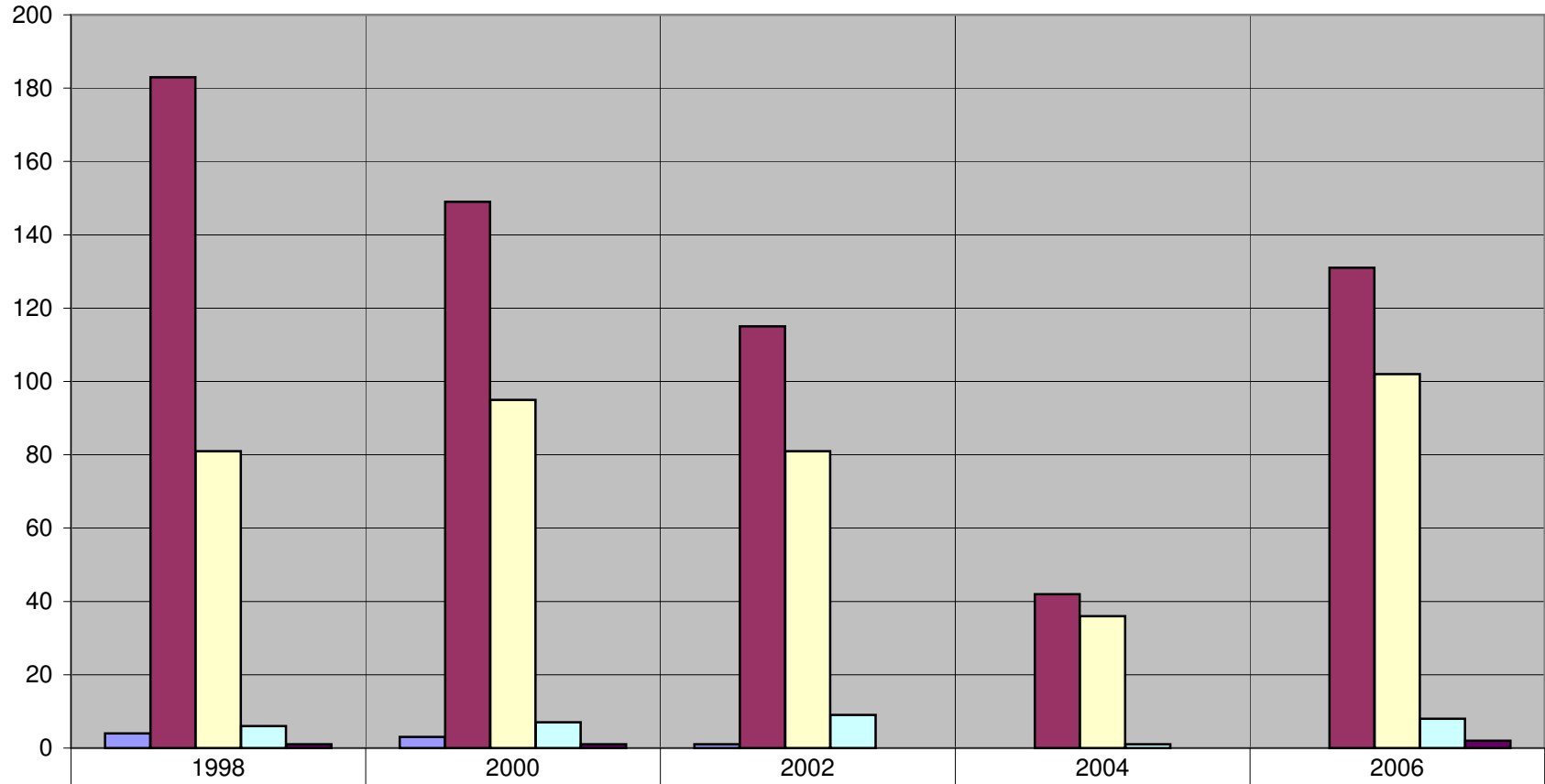
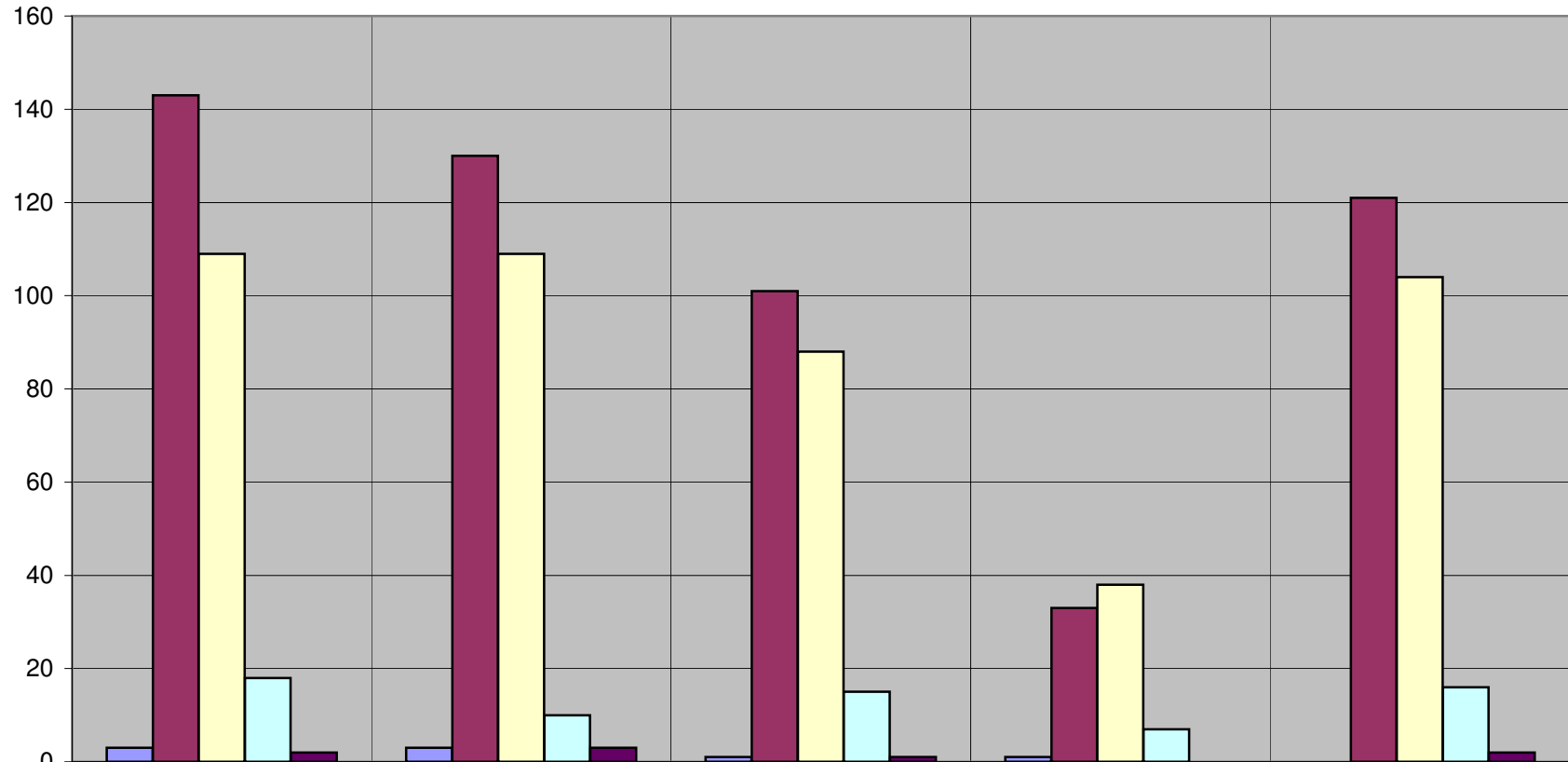


### A1 - Faculty Set High Expectations For You To Learn



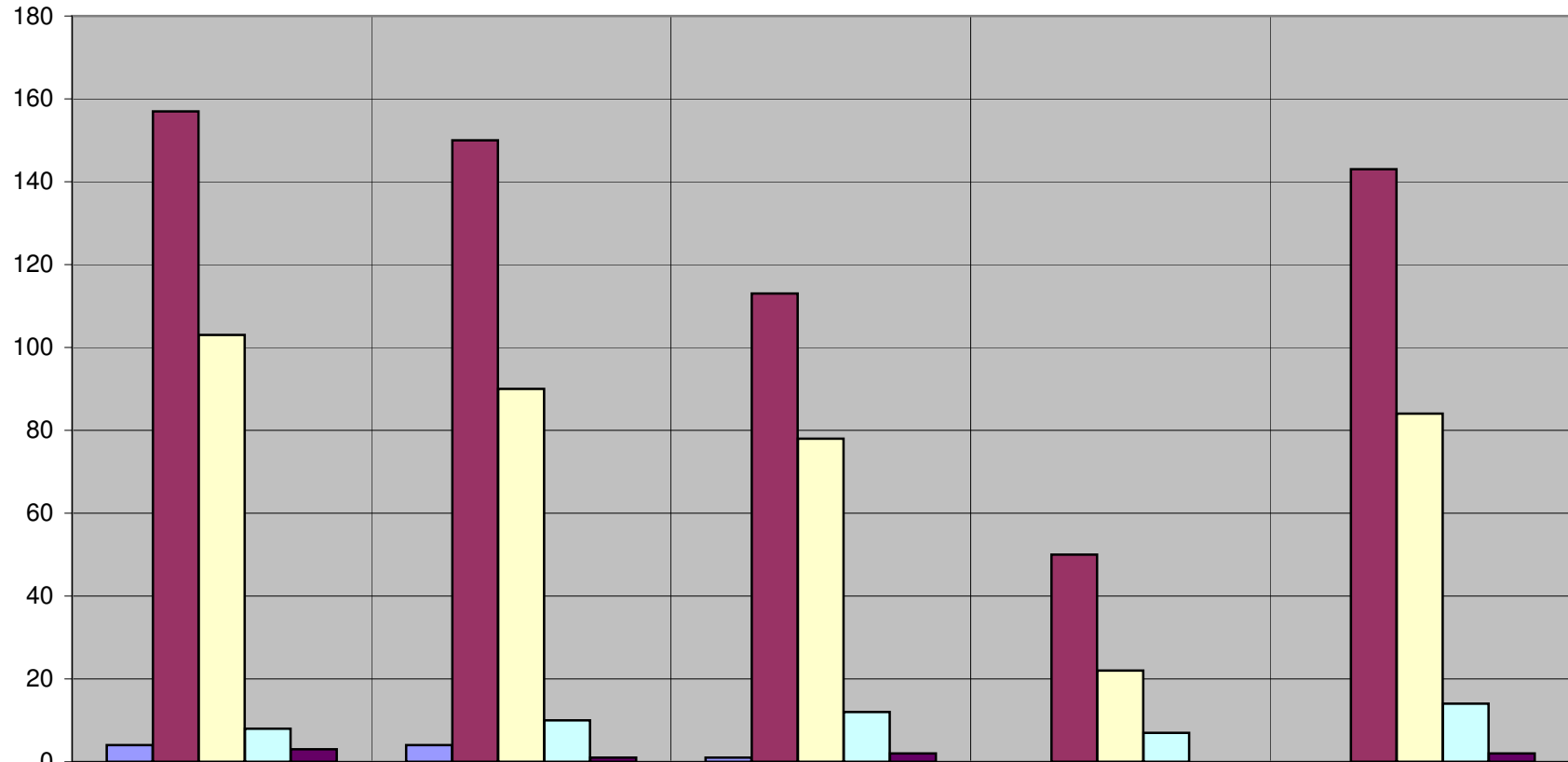
Missing	4	3	1	0	0
Excellent	183	149	115	42	131
Good	81	95	81	36	102
Fair	6	7	9	1	8
Poor	1	1	0	0	2

## A2 - Faculty Respect Diverse Learning Styles



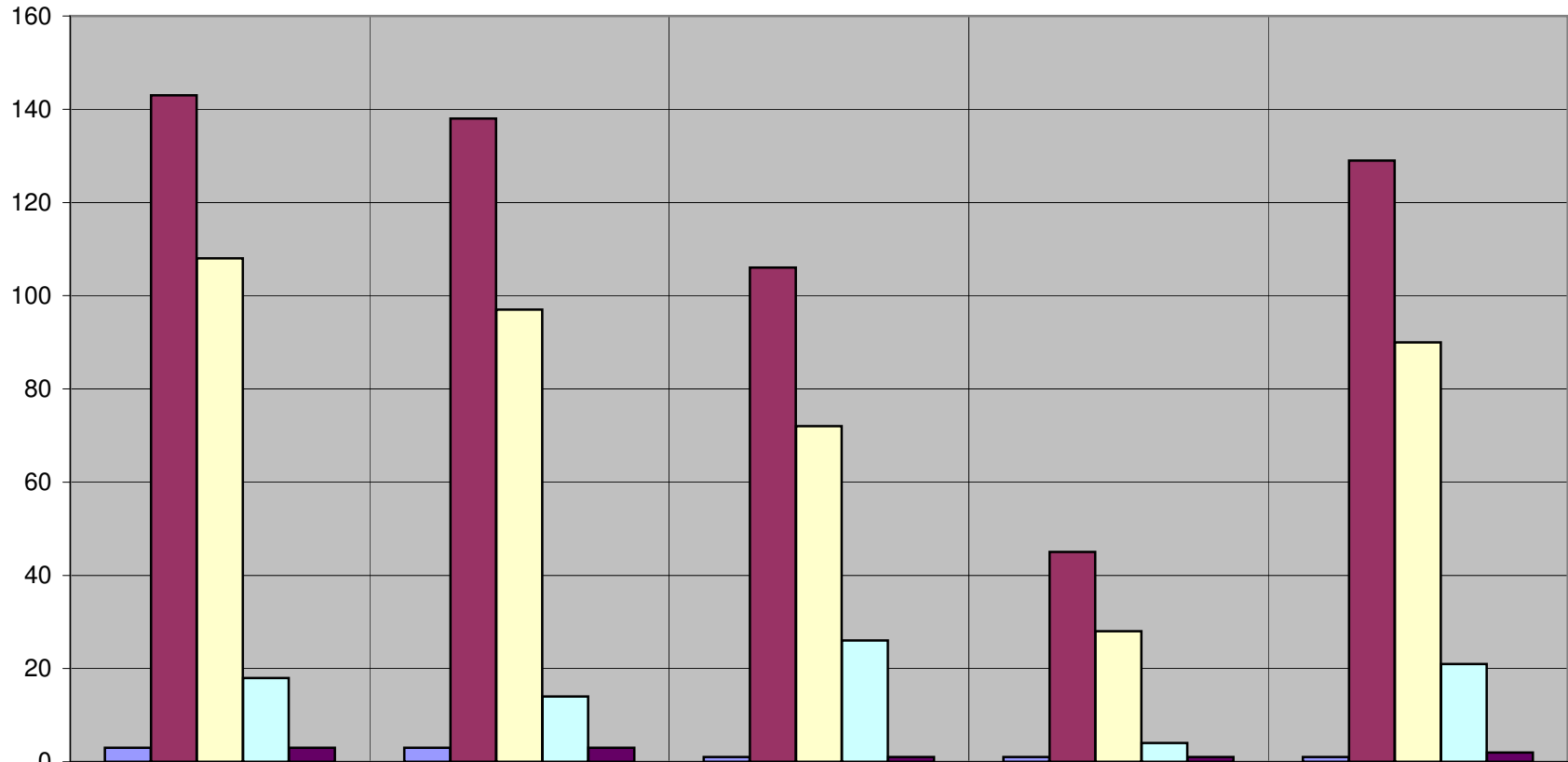
Missing	3	3	1	1	0
Excellent	143	130	101	33	121
Good	109	109	88	38	104
Fair	18	10	15	7	16
Poor	2	3	1	0	2

### A3 - Faculty Encourage You To Be An Active Learner



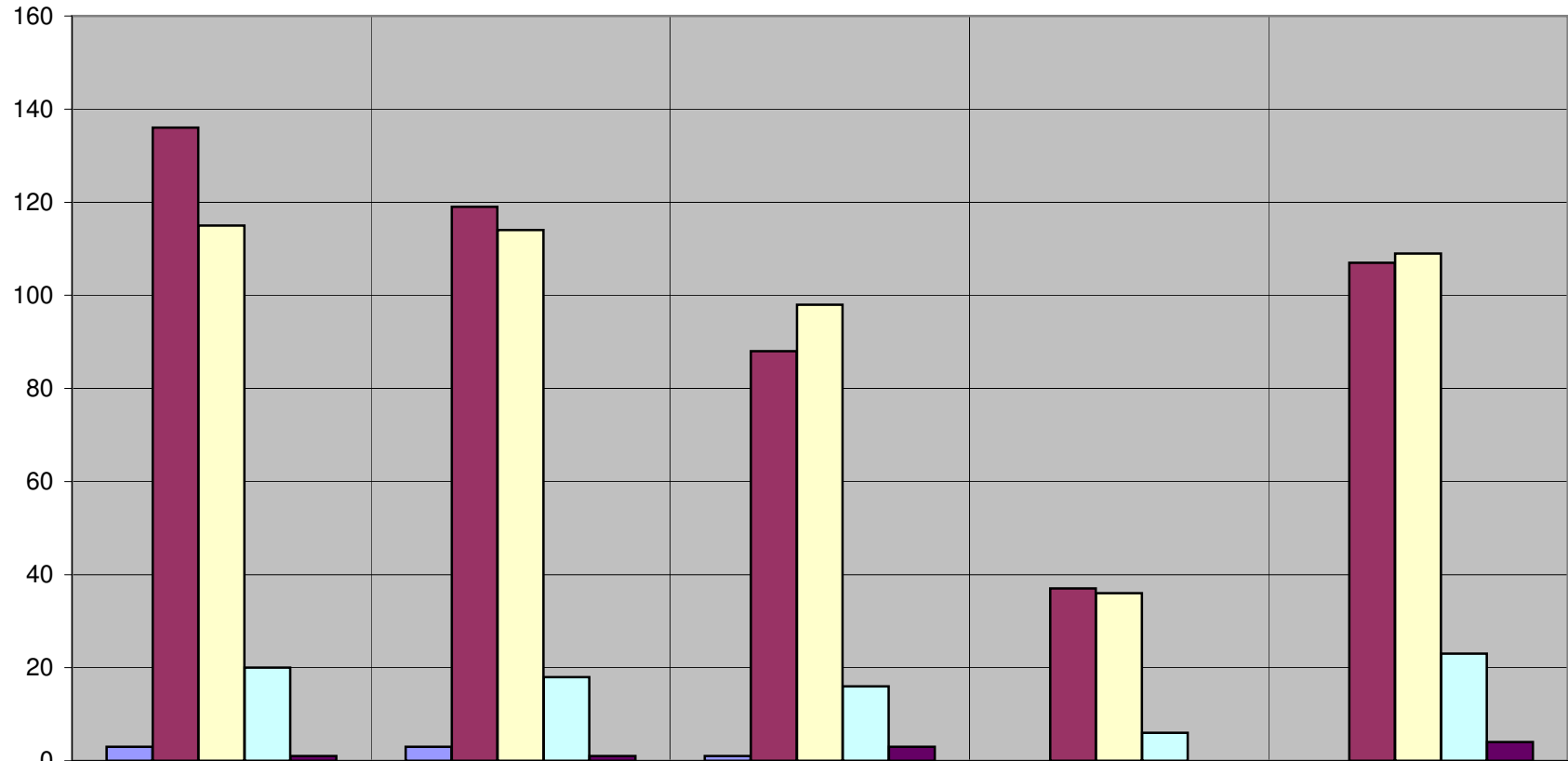
	1998	2000	2002	2004	2006
Missing	4	4	1	0	0
Excellent	157	150	113	50	143
Good	103	90	78	22	84
Fair	8	10	12	7	14
Poor	3	1	2	0	2

### A4 - Faculty Encourage Student-Faculty Interaction



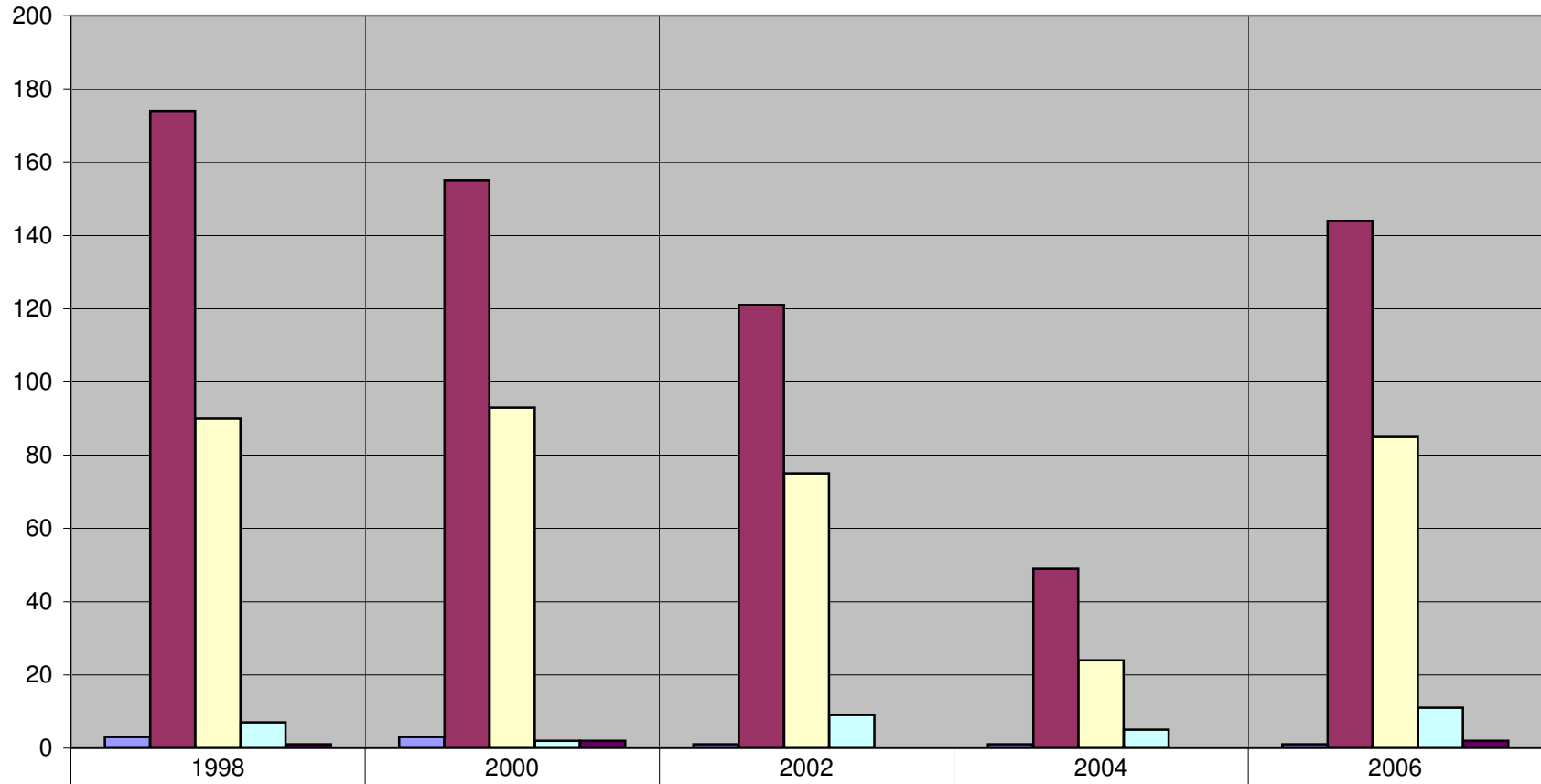
	1998	2000	2002	2004	2006
Missing	3	3	1	1	1
Excellent	143	138	106	45	129
Good	108	97	72	28	90
Fair	18	14	26	4	21
Poor	3	3	1	1	2

### A5 - Faculty Provide Frequent Feedback



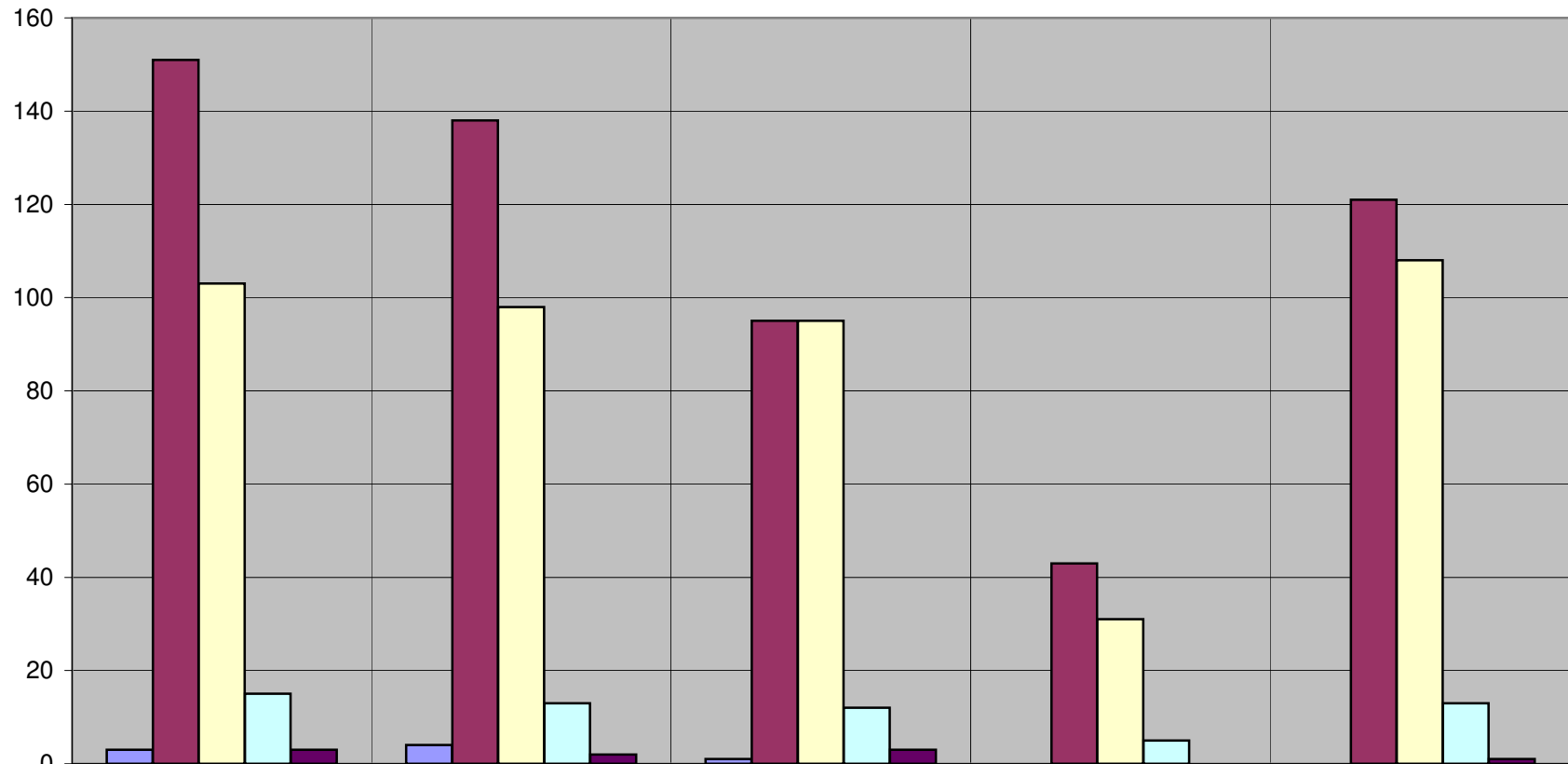
	1998	2000	2002	2004	2006
Missing	3	3	1	0	0
Excellent	136	119	88	37	107
Good	115	114	98	36	109
Fair	20	18	16	6	23
Poor	1	1	3	0	4

### A6 - Faculty Encourage You to Devote Time and Energy to Coursework



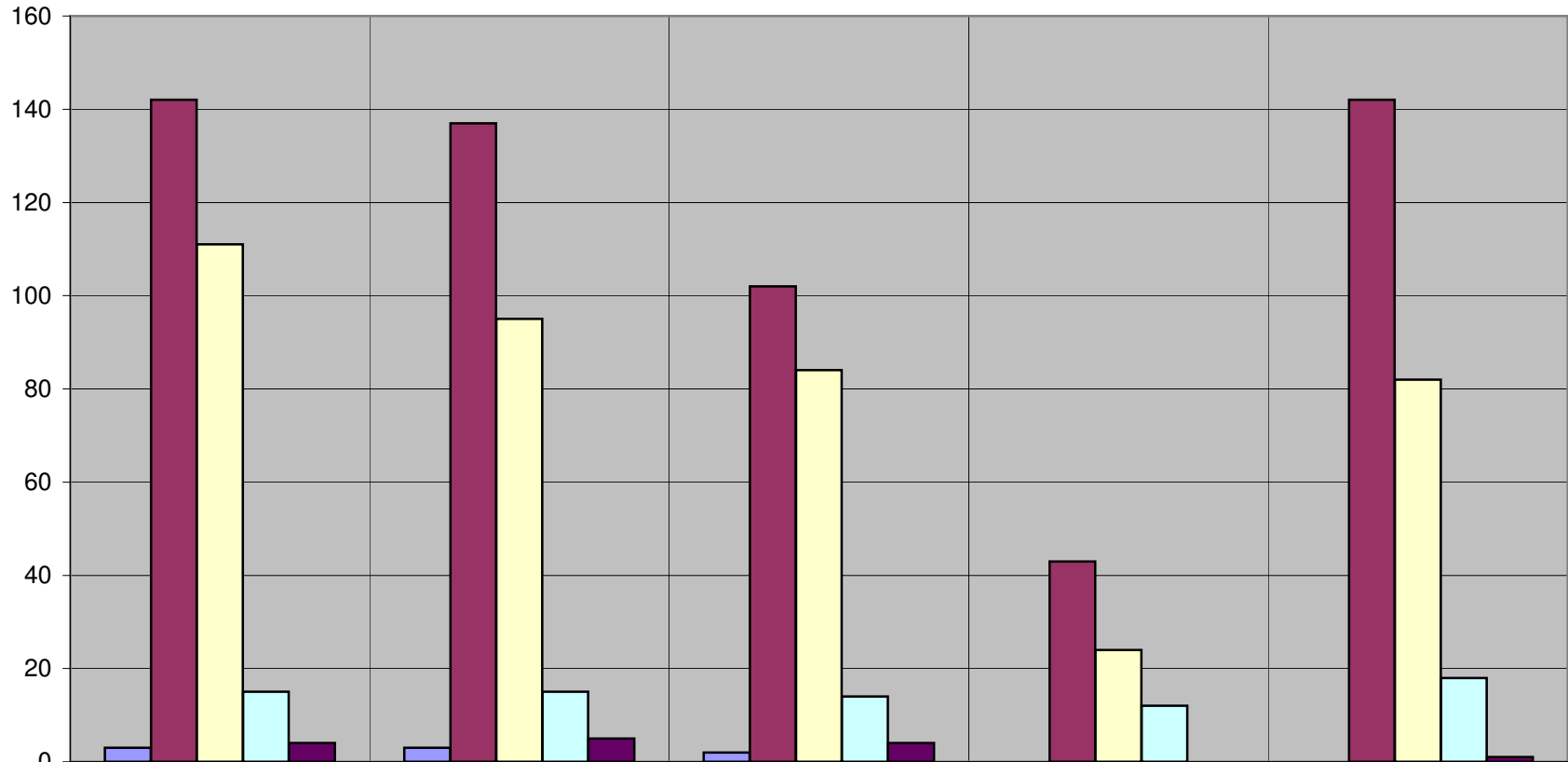
Missing	3	3	1	1	1
Excellent	174	155	121	49	144
Good	90	93	75	24	85
Fair	7	2	9	5	11
Poor	1	2	0	0	2

### A7 - Faculty Develop Cooperative Learning Opportunities



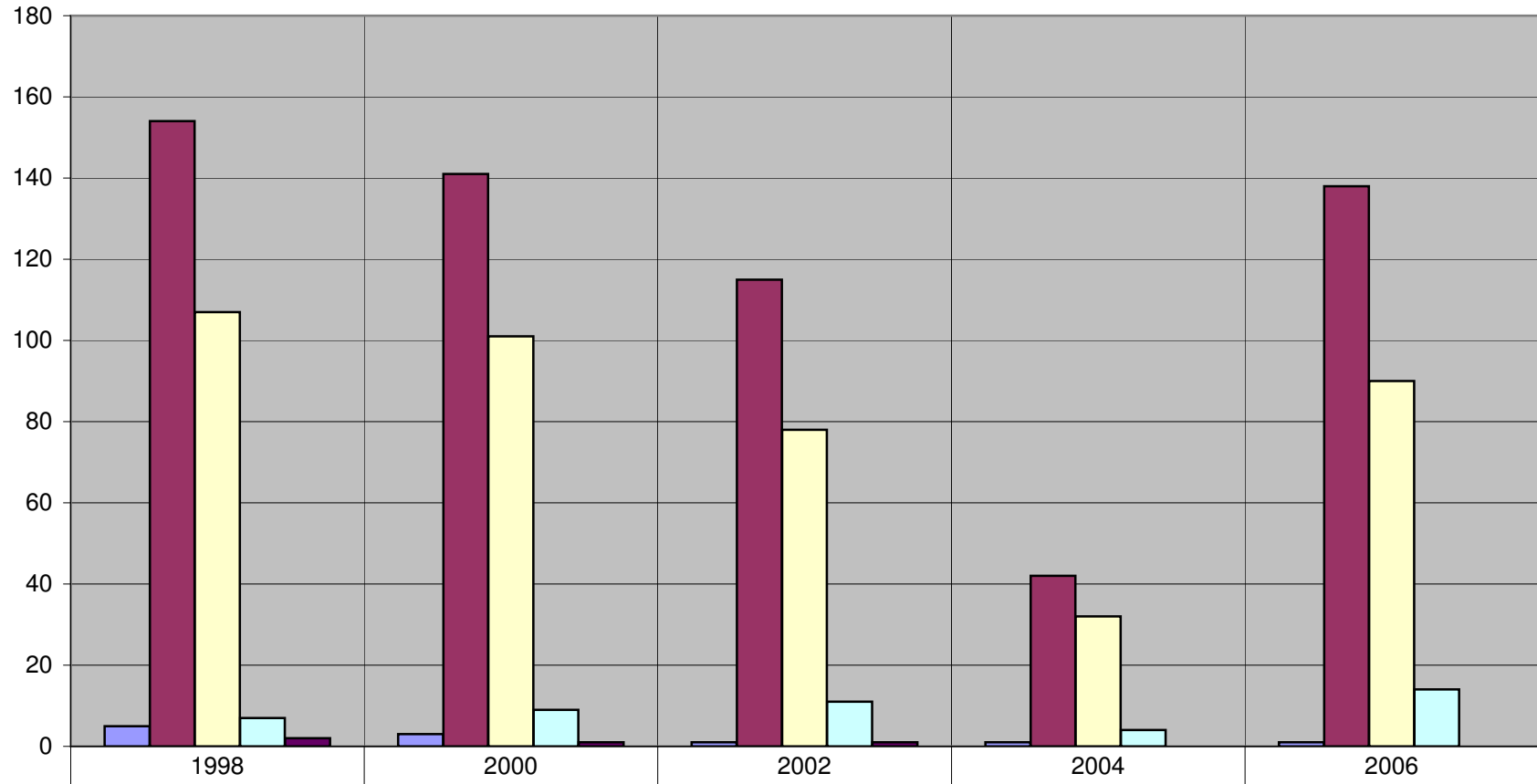
Missing	3	4	1	0	0
Excellent	151	138	95	43	121
Good	103	98	95	31	108
Fair	15	13	12	5	13
Poor	3	2	3	0	1

### A8 - Faculty Care About Your Academic Success



	1998	2000	2002	2004	2006
Missing	3	3	2	0	0
Excellent	142	137	102	43	142
Good	111	95	84	24	82
Fair	15	15	14	12	18
Poor	4	5	4	0	1

### A9 - Evaluation of Instructors on These Previous Eight Measures



Missing	5	3	1	1	1
Excellent	154	141	115	42	138
Good	107	101	78	32	90
Fair	7	9	11	4	14
Poor	2	1	1	0	0